

54th IChO2022

QUESTIONS and MARKING SCHEMES



54th IChO2022
International Chemistry Olympiad



TIANJIN, CHINA

Table of Contents

General Instruction.....	2
Question 1. Rapid and Visual Nucleic Acid Testing for COVID-19.....	9
Question 2. Chromium in Ancient and Modern Times.....	13
Question 3. Capture and Transformation of Carbon Dioxide.....	20
Question 4. A New Journey for Ancient Sulfur.....	30
Question 5. Interconversion among Nitrogen Oxides.....	39
Question 6. Enabling Phosphines.....	49
Question 7. Organic Molecules in Life.....	57
Question 8. Amazing Chiral Spiro Catalyst.....	63
Question 9. Total Synthesis of Capitulactone.....	70
Marking scheme 1	77
Marking scheme 2	80
Marking scheme 3	83
Marking scheme 4	87
Marking scheme 5	95
Marking scheme 6	99
Marking scheme 7	102
Marking scheme 8	105
Marking scheme 9	107



International Chemistry Olympiad 2022 Tianjin, China

54th IChO2022 Tianjin, China

10th July – 18th July, 2022

<https://icho2022.cn/>

CHANGE CREATION FUSION



54th IChO2022

International Chemistry Olympiad



TIANJIN, CHINA

General Instruction

- This examination has **9 problems**.
- Use only a pen and non-programmable calculator.
- You have **5 hours** to complete the exam.
- **Begin** only when the **START** command is given.
- All results must be written in the appropriate boxes with a pen on the **answer sheets**. Use the back of the exam sheets if you need scratch paper. Remember that the content of the answer boxes will be graded.
- Write relevant calculations in the appropriate boxes when necessary. Full marks will be given for correct answers only when your work is shown.
- The invigilator will announce a **30-minute** warning before the **STOP** command.
- You **must stop** working when the **STOP** command is given. Failure to stop writing will lead to the nullification of your exam.
- The official English version of this examination is available on request only for clarification.
- You are not allowed to leave your working place without permission. If you need any assistance (broken calculator, need to visit a restroom, etc.), raise hand and wait until an invigilator arrives.
- **For questions where you are asked to choose from a collection of choices, indicate your answer with a ✓ in the [] before your choice.** An example is provided below:

(Suppose you wish to choose (A) out of (A), (B), (C) and (D).)

[✓] (A) [] (B) [] (C) [] (D)

GOOD LUCK!



Problems and Grading Information

No	Title	Total Points	% of Total
1	Rapid and Visual Nucleic Acid Testing for COVID-19	14	9
2	Chromium in Ancient and Modern Times	21	11
3	Capture and Transformation of Carbon Dioxide	42	14
4	A New Journey for Ancient Sulfur	45	16
5	Interconversion among Nitrogen Oxides	45	15
6	Enabling Phosphines	36	7
7	Organic Molecules in Life	32	9
8	Amazing Chiral Spiro Catalyst	36	10
9	Total Synthesis of Capitulactone	44	9
	Total		100



Physical Constants and Equations

Avogadro constant:	$N_A = 6.022 \times 10^{23} \text{ mol}^{-1}$
Universal gas constant:	$R = 8.31446 \text{ J mol}^{-1} \text{ K}^{-1}$
Standard pressure:	$p^\ominus = 1 \text{ bar} = 10^5 \text{ Pa}$
Standard atmospheric pressure:	$p_{\text{atm}} = 1 \text{ atm} = 1.01325 \text{ bar} = 1.01325 \times 10^5 \text{ Pa}$
Zero of the Celsius scale:	273.15 K
Faraday constant:	$F = 9.6485 \times 10^4 \text{ C mol}^{-1}$
Planck's constant:	$h = 6.626 \times 10^{-34} \text{ J s}$
Mass of electron:	$m_e = 9.109 \times 10^{-31} \text{ kg}$
Speed of light:	$c = 2.998 \times 10^8 \text{ m s}^{-1}$
pi:	$\pi = 3.141592653589793$
Energy of a photon:	$E = hc/\lambda$
Ideal gas equation:	$pV = nRT$
The first law of thermodynamics:	$\Delta U = Q + W$
Enthalpy H:	$H = U + pV$
The change of entropy:	$\Delta S = Q_{\text{rev}}/T$
Gibbs free energy:	$G = H - TS$ $\Delta G^\ominus = -RT \ln K^\ominus$ $\Delta G^\ominus = -nFE_{\text{cell}}^\ominus$ $\Delta G = \Delta G^\ominus + RT \ln Q$
Reaction quotient:	$Q = \frac{[\text{C}]^c [\text{D}]^d}{[\text{A}]^a [\text{B}]^b}$ <i>For a reaction $a[\text{A}] + b[\text{B}] \rightleftharpoons c[\text{C}] + d[\text{D}]$</i>
Nernst equation:	$E = E^\ominus - \frac{RT}{nF} \ln \frac{c_{\text{red}}}{c_{\text{ox}}}$
Langmuir isotherm equation:	$\theta = aP/(1 + aP)$
Arrhenius equation:	$k = Ae^{-E_a/RT}$
Integrated rate law:	
Zero order:	$[\text{A}] = [\text{A}]_0 - kt$
First order:	$\ln[\text{A}] = \ln[\text{A}]_0 - kt$
Second order:	$\frac{1}{[\text{A}]} = \frac{1}{[\text{A}]_0} + kt$

Theory



G0-5

English (Official)

Half-life time for a first order process:

$$t_{1/2} = \frac{\ln 2}{k_1}$$

Half-life time for a second order process ($A + A \rightarrow B$):

$$t_{1/2} = \frac{1}{k[A]_0}$$

Lambert-Beer equation:

$$A = \varepsilon l C$$

Electric work:

$$W = UIt = UQ$$

Quantity of electric charge:

$$Q = It$$

Volume of a sphere:

$$V = \frac{4}{3}\pi r^3$$

Surface area of a sphere:

$$S = 4\pi r^2$$

Theory



54th IChO 2022
International Chemistry Olympiad
TIANJIN, CHINA

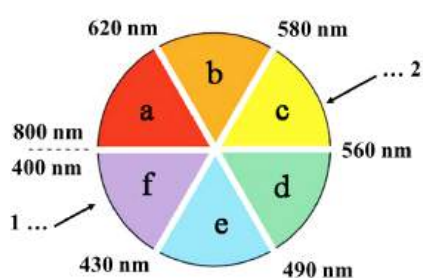
G0-6

English (Official)

Periodic Table

1	2	13	14	15	16	17	18
1 H 1.008	2 He 4.003	5 B 10.81	6 C 12.01	7 N 14.01	8 O 16.00	9 F 19.00	10 Ne 20.18
3 Li 6.941	4 Be 9.012	11 Na 22.99	12 Mg 24.31	13 Al 26.98	14 Si 28.09	15 P 30.97	16 S 32.06
19 K 39.10	20 Ca 40.08	21 Sc 44.96	22 Ti 47.87	23 V 50.94	24 Cr 52.00	25 Mn 54.94	26 Fe 55.85
37 Rb 85.47	38 Sr 87.62	39 Y 88.91	40 Zr 91.22	41 Nb 92.91	42 Mo 95.95	43 Tc -	44 Ru 101.1
55 Cs 132.9	56 Ba 137.3	57-71 La 138.9	72 Hf 178.5	73 Ta 180.9	74 W 183.8	75 Re 186.2	76 Os 190.2
87 Fr -	88 Ra -	89-103 Ac -	104 Rf -	105 Db -	106 Sg -	107 Bh -	108 Hs -
57 La 138.9	58 Ce 140.1	59 Pr 140.9	60 Nd 144.2	61 Pm -	62 Sm 150.4	63 Eu 152.0	64 Gd 157.3
89 Ac -	90 Th 232.0	91 Pa 231.0	92 U 238.0	93 Np -	94 Pu -	95 Am -	96 Cm -
67 Ho 164.9	68 Er 167.3	69 Tm 168.9	70 Yb 173.0	71 Lu 175.0	72 Hf 178.5	73 Ta 180.9	74 W 183.8
113 Nh -	114 Fl -	115 Mc -	116 Lv -	117 Ts -	118 Og -	119 Nh -	120 Ds -
121 Nh -	122 Ds -	123 Nh -	124 Ds -	125 Nh -	126 Ds -	127 Nh -	128 Ds -
129 Nh -	130 Ds -	131 Nh -	132 Ds -	133 Nh -	134 Ds -	135 Nh -	136 Ds -
137 Nh -	138 Ds -	139 Nh -	140 Ds -	141 Nh -	142 Ds -	143 Nh -	144 Ds -
145 Nh -	146 Ds -	147 Nh -	148 Ds -	149 Nh -	150 Ds -	151 Nh -	152 Ds -
153 Nh -	154 Ds -	155 Nh -	156 Ds -	157 Nh -	158 Ds -	159 Nh -	160 Ds -
161 Nh -	162 Ds -	163 Nh -	164 Ds -	165 Nh -	166 Ds -	167 Nh -	168 Ds -
169 Nh -	170 Ds -	171 Nh -	172 Ds -	173 Nh -	174 Ds -	175 Nh -	176 Ds -
177 Nh -	178 Ds -	179 Nh -	180 Ds -	181 Nh -	182 Ds -	183 Nh -	184 Ds -
185 Nh -	186 Ds -	187 Nh -	188 Ds -	189 Nh -	190 Ds -	191 Nh -	192 Ds -
193 Nh -	194 Ds -	195 Nh -	196 Ds -	197 Nh -	198 Ds -	199 Nh -	200 Ds -
201 Nh -	202 Ds -	203 Nh -	204 Ds -	205 Nh -	206 Ds -	207 Nh -	208 Ds -
209 Nh -	210 Ds -	211 Nh -	212 Ds -	213 Nh -	214 Ds -	215 Nh -	216 Ds -
217 Nh -	218 Ds -	219 Nh -	220 Ds -	221 Nh -	222 Ds -	223 Nh -	224 Ds -
225 Nh -	226 Ds -	227 Nh -	228 Ds -	229 Nh -	230 Ds -	231 Nh -	232 Ds -
233 Nh -	234 Ds -	235 Nh -	236 Ds -	237 Nh -	238 Ds -	239 Nh -	240 Ds -
241 Nh -	242 Ds -	243 Nh -	244 Ds -	245 Nh -	246 Ds -	247 Nh -	248 Ds -
249 Nh -	250 Ds -	251 Nh -	252 Ds -	253 Nh -	254 Ds -	255 Nh -	256 Ds -
257 Nh -	258 Ds -	259 Nh -	260 Ds -	261 Nh -	262 Ds -	263 Nh -	264 Ds -
265 Nh -	266 Ds -	267 Nh -	268 Ds -	269 Nh -	270 Ds -	271 Nh -	272 Ds -
273 Nh -	274 Ds -	275 Nh -	276 Ds -	277 Nh -	278 Ds -	279 Nh -	280 Ds -
281 Nh -	282 Ds -	283 Nh -	284 Ds -	285 Nh -	286 Ds -	287 Nh -	288 Ds -
289 Nh -	290 Ds -	291 Nh -	292 Ds -	293 Nh -	294 Ds -	295 Nh -	296 Ds -
297 Nh -	298 Ds -	299 Nh -	300 Ds -	301 Nh -	302 Ds -	303 Nh -	304 Ds -
305 Nh -	306 Ds -	307 Nh -	308 Ds -	309 Nh -	310 Ds -	311 Nh -	312 Ds -
313 Nh -	314 Ds -	315 Nh -	316 Ds -	317 Nh -	318 Ds -	319 Nh -	320 Ds -
321 Nh -	322 Ds -	323 Nh -	324 Ds -	325 Nh -	326 Ds -	327 Nh -	328 Ds -
329 Nh -	330 Ds -	331 Nh -	332 Ds -	333 Nh -	334 Ds -	335 Nh -	336 Ds -
337 Nh -	338 Ds -	339 Nh -	340 Ds -	341 Nh -	342 Ds -	343 Nh -	344 Ds -
345 Nh -	346 Ds -	347 Nh -	348 Ds -	349 Nh -	350 Ds -	351 Nh -	352 Ds -
353 Nh -	354 Ds -	355 Nh -	356 Ds -	357 Nh -	358 Ds -	359 Nh -	360 Ds -
361 Nh -	362 Ds -	363 Nh -	364 Ds -	365 Nh -	366 Ds -	367 Nh -	368 Ds -
369 Nh -	370 Ds -	371 Nh -	372 Ds -	373 Nh -	374 Ds -	375 Nh -	376 Ds -
377 Nh -	378 Ds -	379 Nh -	380 Ds -	381 Nh -	382 Ds -	383 Nh -	384 Ds -
385 Nh -	386 Ds -	387 Nh -	388 Ds -	389 Nh -	390 Ds -	391 Nh -	392 Ds -
393 Nh -	394 Ds -	395 Nh -	396 Ds -	397 Nh -	398 Ds -	399 Nh -	400 Ds -
401 Nh -	402 Ds -	403 Nh -	404 Ds -	405 Nh -	406 Ds -	407 Nh -	408 Ds -
409 Nh -	410 Ds -	411 Nh -	412 Ds -	413 Nh -	414 Ds -	415 Nh -	416 Ds -
417 Nh -	418 Ds -	419 Nh -	420 Ds -	421 Nh -	422 Ds -	423 Nh -	424 Ds -
425 Nh -	426 Ds -	427 Nh -	428 Ds -	429 Nh -	430 Ds -	431 Nh -	432 Ds -
433 Nh -	434 Ds -	435 Nh -	436 Ds -	437 Nh -	438 Ds -	439 Nh -	440 Ds -
441 Nh -	442 Ds -	443 Nh -	444 Ds -	445 Nh -	446 Ds -	447 Nh -	448 Ds -
449 Nh -	450 Ds -	451 Nh -	452 Ds -	453 Nh -	454 Ds -	455 Nh -	456 Ds -
457 Nh -	458 Ds -	459 Nh -	460 Ds -	461 Nh -	462 Ds -	463 Nh -	464 Ds -
465 Nh -	466 Ds -	467 Nh -	468 Ds -	469 Nh -	470 Ds -	471 Nh -	472 Ds -
473 Nh -	474 Ds -	475 Nh -	476 Ds -	477 Nh -	478 Ds -	479 Nh -	480 Ds -
481 Nh -	482 Ds -	483 Nh -	484 Ds -	485 Nh -	486 Ds -	487 Nh -	488 Ds -
489 Nh -	490 Ds -	491 Nh -	492 Ds -	493 Nh -	494 Ds -	495 Nh -	496 Ds -
497 Nh -	498 Ds -	499 Nh -	500 Ds -	501 Nh -	502 Ds -	503 Nh -	504 Ds -
505 Nh -	506 Ds -	507 Nh -	508 Ds -	509 Nh -	510 Ds -	511 Nh -	512 Ds -
513 Nh -	514 Ds -	515 Nh -	516 Ds -	517 Nh -	518 Ds -	519 Nh -	520 Ds -
521 Nh -	522 Ds -	523 Nh -	524 Ds -	525 Nh -	526 Ds -	527 Nh -	528 Ds -
529 Nh -	530 Ds -	531 Nh -	532 Ds -	533 Nh -	534 Ds -	535 Nh -	536 Ds -
537 Nh -	538 Ds -	539 Nh -	540 Ds -	541 Nh -	542 Ds -	543 Nh -	544 Ds -
545 Nh -	546 Ds -	547 Nh -	548 Ds -	549 Nh -	550 Ds -	551 Nh -	552 Ds -
553 Nh -	554 Ds -	555 Nh -	556 Ds -	557 Nh -	558 Ds -	559 Nh -	560 Ds -
561 Nh -	562 Ds -	563 Nh -	564 Ds -	565 Nh -	566 Ds -	567 Nh -	568 Ds -
569 Nh -	570 Ds -	571 Nh -	572 Ds -	573 Nh -	574 Ds -	575 Nh -	576 Ds -
577 Nh -	578 Ds -	579 Nh -	580 Ds -	581 Nh -	582 Ds -	583 Nh -	584 Ds -
585 Nh -	586 Ds -	587 Nh -	588 Ds -	589 Nh -	590 Ds -	591 Nh -	592 Ds -
593 Nh -	594 Ds -	595 Nh -	596 Ds -	597 Nh -	598 Ds -	599 Nh -	600 Ds -
601 Nh -	602 Ds -	603 Nh -	604 Ds -	605 Nh -	606 Ds -	607 Nh -	608 Ds -
609 Nh -	610 Ds -	611 Nh -	612 Ds -	613 Nh -	614 Ds -	615 Nh -	616 Ds -
617 Nh -	618 Ds -	619 Nh -	620 Ds -	621 Nh -	622 Ds -	623 Nh -	624 Ds -
625 Nh -	626 Ds -	627 Nh -	628 Ds -	629 Nh -	630 Ds -	631 Nh -	632 Ds -
633 Nh -	634 Ds -	635 Nh -	636 Ds -	637 Nh -	638 Ds -	639 Nh -	640 Ds -
641 Nh -	642 Ds -	643 Nh -	644 Ds -	645 Nh -	646 Ds -	647 Nh -	648 Ds -
649 Nh -	650 Ds -	651 Nh -	652 Ds -	653 Nh -	654 Ds -	655 Nh -	656 Ds -
657 Nh -	658 Ds -	659 Nh -	660 Ds -	661 Nh -	662 Ds -	663 Nh -	664 Ds -
665 Nh -	666 Ds -	667 Nh -	668 Ds -	669 Nh -	670 Ds -	671 Nh -	672 Ds -
673 Nh -	674 Ds -	675 Nh -	676 Ds -	677 Nh -	678 Ds -	679 Nh -	680 Ds -
681 Nh -	682 Ds -	683 Nh -	684 Ds -	685 Nh -	686 Ds -	687 Nh -	688 Ds -
689 Nh -	690 Ds -	691 Nh -	692 Ds -	693 Nh -	694 Ds -	695 Nh -	696 Ds -
697 Nh -	698 Ds -	699 Nh -	700 Ds -	701 Nh -	702 Ds -	703 Nh -	704 Ds -
705 Nh -	706 Ds -	707 Nh -	708 Ds -	709 Nh -	710 Ds -	711 Nh -	712 Ds -
713 Nh -	714 Ds -	715 Nh -	716 Ds -	717 Nh -	718 Ds -	719 Nh -	720 Ds -
721 Nh -	722 Ds -	723 Nh -	724 Ds -	725 Nh -	726 Ds -	727 Nh -	728 Ds -
729 Nh -	730 Ds -	731 Nh -	732 Ds -	733 Nh -	734 Ds -	735 Nh -	736 Ds -
737 Nh -	738 Ds -	739 Nh -	740 Ds -	741 Nh -	742 Ds -	743 Nh -	744 Ds -
745 Nh -	746 Ds -	747 Nh -	748 Ds -	749 Nh -	750 Ds -	751 Nh -	752 Ds -
753 Nh -	754 Ds -	755 Nh -	756 Ds -	757 Nh -	758 Ds -	759 Nh -	760 Ds -
761 Nh -	762 Ds -	763 Nh -	764 Ds -	765 Nh -	766 Ds -	767 Nh -	768 Ds -
769 Nh -	770 Ds -	771 Nh -	772 Ds -	773 Nh -	774 Ds -	775 Nh -	776 Ds -
777 Nh -	778 Ds -	779 Nh -	780 Ds -	781 Nh -	782 Ds -	783 Nh -	784 Ds -
785 Nh -	786 Ds -	787 Nh -	788 Ds -	789 Nh -	790 Ds -	791 Nh -	792 Ds -
793 Nh -	794 Ds -	795 Nh -	796 Ds -	797 Nh -	798 Ds -	799 Nh -	800 Ds -
801 Nh -	802 Ds -	803 Nh -	804 Ds -	805 Nh -	806 Ds -	807 Nh -	808 Ds -
809 Nh -	810 Ds -	811 Nh -	812 Ds -	813 Nh -	814 Ds -	815 Nh -	816 Ds -
817 Nh -	818 Ds -	819 Nh -	820 Ds -	821 Nh -	822 Ds -	823 Nh -	824 Ds -
825 Nh -	826 Ds -	827 Nh -	828 Ds -	829 Nh -	830 Ds -	831 Nh -	832 Ds -
833 Nh -	834 Ds -	835 Nh -	836 Ds -	837 Nh -	838 Ds -	839 Nh -	840 Ds -
841 Nh -	842 Ds -	843 Nh -	844 Ds -	845 Nh -	846 Ds -	847 Nh -	848 Ds -
849 Nh -	850 Ds -	851 Nh -	852 Ds -	853 Nh -	854 Ds -	855 Nh -	856 Ds -
857 Nh -	858 Ds -	859 Nh -	860 Ds -	861 Nh -	862 Ds -	863 Nh -	864 Ds -
865 Nh -	866 Ds -	867 Nh -	868 Ds -	869 Nh -	870 Ds -	871 Nh -	872 Ds -
873 Nh -	874 Ds -	875 Nh -	876 Ds -	877 Nh -	878 Ds -	879 Nh -	880 Ds -
881 Nh -	882 Ds -	883 Nh -	884 Ds -	885 Nh -	886 Ds -	887 Nh -	888 Ds -
889 Nh -	890 Ds -	891 Nh -	892 Ds -	893 Nh -	894 Ds -	895 Nh -	

The Color Wheel



a: red b: orange c: yellow d: green e: blue f: violet
1: If a substance absorbs here 2: it appears as this color.

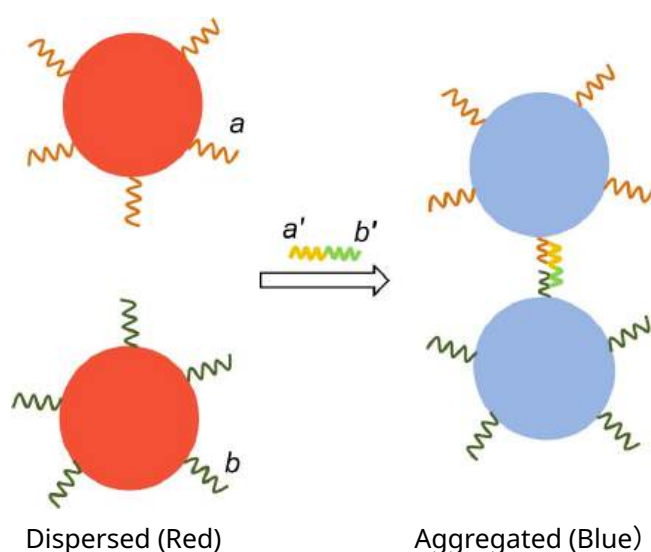
Figure 0.1

Rapid and Visual Nucleic Acid Testing for COVID-19

9% of the total						
Question	1.1	1.2	1.3	1.4	1.5	Total
Points	1	1	4	4	4	14
Score						

Fast and simple methods for early detection of COVID-19 are urgently needed. Gold nanoparticles-aided detection is one of the promising methods. Gold nanoparticles are widely used as a visible readout for test strips due to their high molar extinction coefficients (molar absorptivity). The color appearance of gold nanoparticles is closely associated with their sizes and dispersity. Generally, the larger the gold nanoparticles, the more reddish the color is. Once the nanoparticles are aggregated, the color shifts from red to blue.

When the surface of gold nanoparticles is modified with two kinds of single-stranded nucleic acid fragments a and b , the gold nanoparticles would aggregate in the presence of the target nucleic acid (a' b'), causing the color change of the solution from red to blue in several minutes (as indicated below). Based on this principle, the target nucleic acids collected from the coronavirus in a sample can be detected.



- 1.1** **Indicate** the absorption band region of the dispersed gold nanoparticles with an appropriate letter (a-f in the color wheel of **Figure 0.1** in **General Instructions**) 1.0 pt



- 1.2** **Indicate** the change in the absorption spectrum of the gold nanoparticles once they are aggregated. Compared to the absorption wavelength of the dispersed gold nanoparticles, the wavelength of the aggregated nanoparticles
- (a) becomes longer
 - (b) becomes shorter
 - (c) does not change

1.0 pt

Gold nanoparticles are composed of gold atoms that are closely packed as solid gold (density $\rho = 19.3 \text{ g cm}^{-3}$).

- 1.3** **Calculate** how many gold atoms (N) are there in a spherical gold nanoparticle with a **diameter** of 30.0 nm.

4.0 pt

The synthesis of gold nanoparticles depends on the redox reaction between hydrogen tetrachloroaurate(III) ($\text{HAuCl}_4 \cdot 3\text{H}_2\text{O}$, $M_W = 394$) and reducing substances (such as sodium citrate). 5.2 mg of $\text{HAuCl}_4 \cdot 3\text{H}_2\text{O}$ was completely converted into uniform spherical gold nanoparticles with a diameter of 30.0 nm in a 100.0 mL reaction solution. The absorbance of the resulting red solution was 0.800 measured at 530 nm by a UV-Vis spectrometer.

- 1.4** **Calculate** the molar extinction coefficient (molar absorptivity) of the resulting gold nanoparticles solution at 530 nm per mol of gold nanoparticles. The optical path of the cuvette used is 1 cm. If you failed to get the number of gold atoms (N) in **1.3**, use $N = 1.00 \times 10^5$.

4.0 pt

The standard addition method was used for colorimetric detection of the target nucleic acid. The original throat swab sample was collected and divided equally into two portions. After addition of the probe solutions and water (as indicated below), the absorbance of the two resulting solutions was measured at 600 nm separately.

No.	Volume of throat swab sample (mL)	Volume of solution of gold nanoparticles modified with nucleic acid fragments (mL)	Volume of standard solution containing $2.0 \mu\text{g mL}^{-1}$ target nucleic acid (mL)	Volume of water (mL)	Absorbance
1	0.10	0.80	0.00	0.10	0.400
2	0.10	0.80	0.10	0.00	0.900

- 1.5** **Calculate** the concentration of the viral nucleic acids in the original throat swab sample.

4.0 pt

Rapid and Visual Nucleic Acid Testing for COVID-19

9% of the total						
Question	1.1	1.2	1.3	1.4	1.5	Total
Points	1	1	4	4	4	14
Score						

1.1 (1.0 pt)

[] (a) [] (b) [] (c) [] (d) [] (e) [] (f)

1.2 (1.0 pt)

[] (a) [] (b) [] (c)

1.3 (4.0 pt)

$N =$ _____



1.4 (4.0 pt)

$\varepsilon =$ _____ $\text{L mol}^{-1} \text{cm}^{-1}$

1.5 (4.0 pt)

$C_X =$ _____ $\mu\text{g mL}^{-1}$

Chromium in Ancient and Modern Times

11% of the total										
Question	2.1	2.2	2.3	2.4	2.5	2.6	2.7	2.8	2.9	Total
Points	2	1	6	1	2	1	1	5	2	21
Score										



(The photo is from the website of Palace Museum)

Black glazed porcelain is a special Chinese porcelain and was popular in the Tang and Song dynasties (ca. 1000 years ago). The ceramic ware contained iron oxides as the main color rendering agent, which was mixed with other transition metal oxides to exhibit different color appearance such as auburn, dark brown or black. Currently, the black glazed porcelain is still popular in China.

The typical black glaze is composed of Fe-containing oxides with a spinel structure. Spinel oxides have the general formula AB_2O_4 and the structure consists of a cubic close packing array of O^{2-} ions in which the **A** cations occupy one-eighth of the tetrahedral vacancies and the **B** cations occupy half of the octahedral vacancies, as shown in **Figure 2.1(a)** for a unit cell.

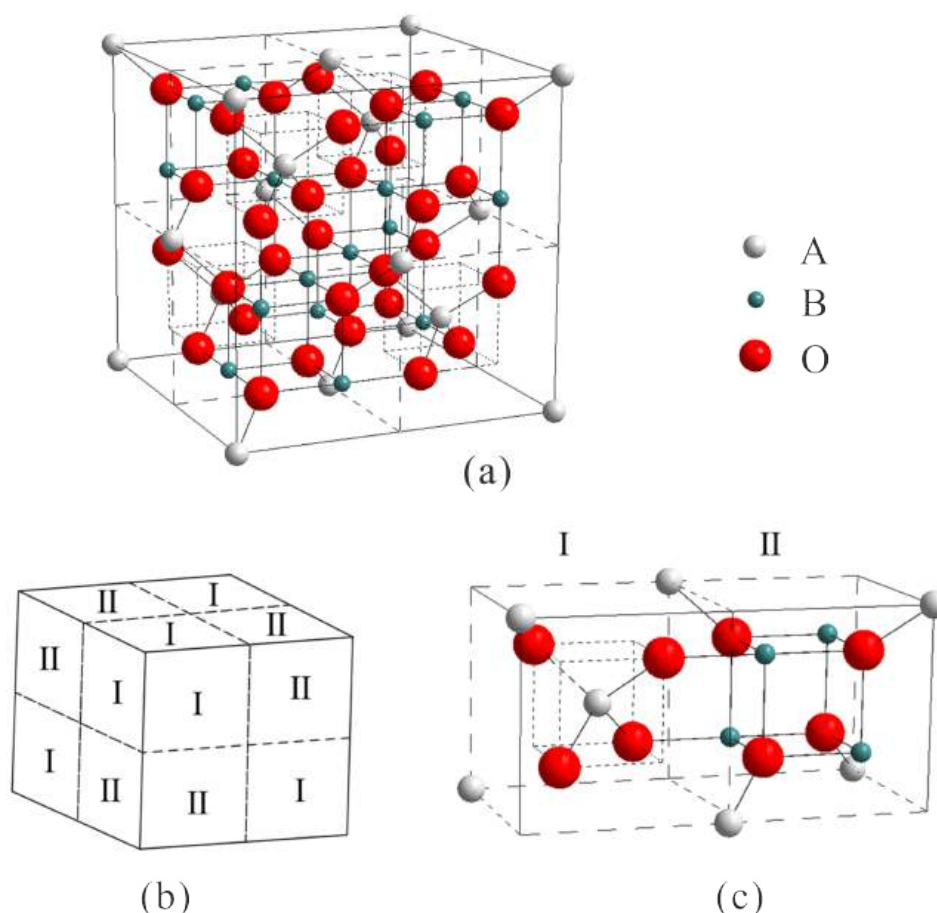


Figure 2.1 Illustration of spinel structure

The cubic unit cell of a spinel structure can be divided into 8 cubic subunits, and the dashed lines represent the internal edges of the subunits. 4 of the subunits belong to type I, and the other 4 subunits are type II (**Figure 2.1(b)**). The details of adjacent subunits of type I and type II are shown in **Figure 2.1(c)**.

2.1 How many cations of type **A** and **B** are there in a unit cell?

2.0 pt

The black ceramic glaze with spinel structure can be produced by roasting Fe_2O_3 and Cr_2O_3 in a certain proportion in a reducing atmosphere (**reaction (I)**). When Fe_2O_3 and Cr_2O_3 are reacted with the mass ratio of 63.6 : 36.4, they completely transform into a pure stoichiometric compound. The product has a spinel structure, in which the tetrahedral **A** sites are occupied by iron cations only.

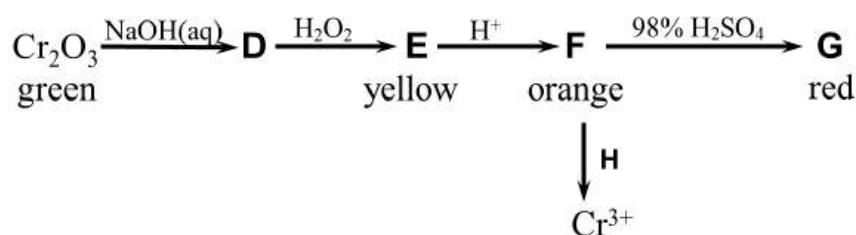
2.2 In **reaction (I)**, which element is reduced?

1.0 pt

2.3 Calculate the numbers of Fe^{3+} and Cr^{3+} in the **B** sites of one unit cell.

6.0 pt

Besides doping in black ceramic glaze, chromium-containing pigments are used in painting and printing due to the abundant color originating from chromium with different oxidation states, such as +2, +3 and +6. The pigment, chrome green (Cr_2O_3) can be converted into a series of other compounds (**D-G**) in the following process, where **E**, **F**, **G** are yellow, orange and red respectively.



2.4 Write the chemical formula of **E**.

1.0 pt

2.5 Write the reaction equation of **F** \rightarrow **G**.

2.0 pt

2.6 Choose the agent which could be **H**.

1.0 pt

- (A) FeSO_4
- (B) FeCl_3
- (C) ZnSO_4
- (D) CuSO_4

The variable valence of chromium is not only important for the production of pigments, but also useful for catalysis. For example, a typical Phillips catalyst for the polymerization of ethylene consists of chromium oxide species grafted onto a porous support material such as amorphous silica. The tetra-coordinated Cr(VI) species is the core in the pre-catalyst (**1**), which is proposed to be reduced quickly into a six-coordinated Cr(II) species (**2**) by the ethylene molecules at the beginning. **2** is proposed to further catalyze polymerization of ethylene molecules.

2.7 The reaction of **1** with ethylene can be traced by UV-vis spectra, which show the light absorption of **1** at 21500 cm^{-1} and the light absorption of **2** at 16700 cm^{-1} in the visible region, respectively. **Choose** the appropriate combination of colors of **1** and **2**. 1.0 pt

- (A) orange and white, respectively
- (B) orange and blue, respectively
- (C) blue and orange, respectively
- (D) blue and white, respectively

2.8 Assuming that the Cr(II) ion in **2** is located in a regular octahedral crystal field with a splitting energy Δ_o of 16000 cm^{-1} , **draw** the configurations of d electrons of the Cr(II) ion in **2**, and **calculate** the crystal field stabilization energy (CFSE) for the Cr(II) ion in **2**. (Note: The pairing energy P for Cr(II) in **2** is 23500 cm^{-1}) 5.0 pt

2.9 Coordination compounds/ions exhibit paramagnetism when containing unpaired electrons, and the corresponding magnetic moment (μ) of transition metal cations is calculated by the function $\mu = \sqrt{n(n+2)}\mu_B$ where n is the number of unpaired electrons. **Calculate** the magnetic moment in term of μ_B for the Cr(II) ion in **2**. 2.0 pt

Theory



54th IChO2022
International Chemistry Olympiad
TIANJIN, CHINA

A2-1

English (Official)

Chromium in Ancient and Modern Times

11% of the total										
Question	2.1	2.2	2.3	2.4	2.5	2.6	2.7	2.8	2.9	Total
Points	2	1	6	1	2	1	1	5	2	21
Score										

2.1 (2.0 pt)

A : _____ B : _____

2.2 (1.0 pt)

2.3 (6.0 pt)

Theory



A2-2

English (Official)

2.4 (1.0 pt)

2.5 (2.0 pt)

2.6 (1.0 pt)

☐ (A) ☐ (B) ☐ (C) ☐ (D)

2.7 (1.0 pt)

☐ (A) ☐ (B) ☐ (C) ☐ (D)

2.8 (5.0 pt)

CFSE = _____ cm^{-1}

2.9 (2.0 pt)

μ = _____ μ_{B}

Capture and Transformation of Carbon Dioxide

14% of the total													
Question	3.1	3.2	3.3	3.4	3.5	3.6	3.7	3.8	3.9	3.10	3.11	3.12	Total
Points	2	5	2	3	2	8	2	2	5	7	2	2	42
Score													

Climate change is one of the most critical global challenges nowadays. The increase of CO₂ concentration in the atmosphere has been recognized as the primary driver of global warming. The study of the capture and transformation of CO₂ has attracted considerable attention.

Direct air capture (DAC) technology which aims to extract CO₂ directly from ambient air is promising. The conventional method of DAC is wet scrubbing with alkaline hydroxide solutions (typically NaOH), where CO₂ in air is absorbed till pH ≈ 10 (**step 1**). The spent sorbent is regenerated by dosing calcium hydroxide into the system (**step 2**). The white precipitate **A** received in **step 2** decomposes at 700 °C, giving rise to CO₂ and another white compound **B** (**step 3**). Finally, calcium hydroxide can be generated by the hydration of **B**. This process is highly energy-demanding. (H₂CO₃ : $K_{a1} = 4.5 \times 10^{-7}$, $K_{a2} = 4.7 \times 10^{-11}$)

3.1 Write the formulas for **A** and **B** respectively.

2.0 pt

3.2 Write the balanced equations of all possible reactions in **steps 1-3**. NaOH solution is used as sorbent.

5.0 pt

Recently, an electrochemical process was developed for regenerating the alkaline solution in the wet scrubbing process for DAC application, and pure CO₂ gas could be recovered that is suitable for storage or utilization. The process is based on a H₂-recycling electrochemical system (HRES), as shown in **Figure 3.1**.

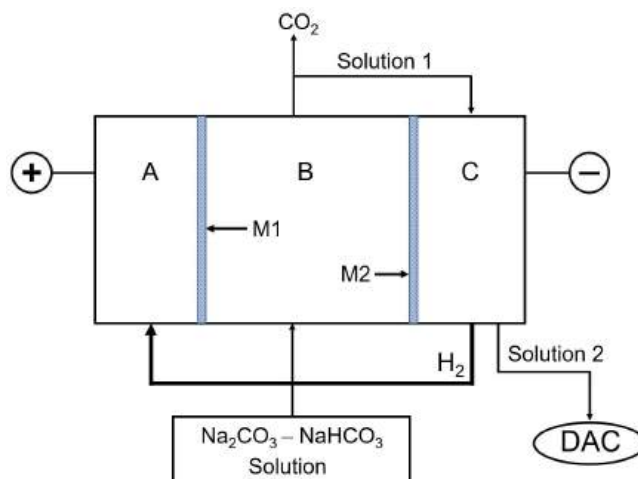


Figure 3.1 Schematic drawing of the experimental setup

The electrochemical cell contains three compartments: an anode region (A), an acidifying region (B), and a cathode region (C). They are separated by ion-selective permeable membranes M1 and M2. During the operation, protons produced from H_2 oxidation at the anode are transported to the acidifying compartment where the spent solution ($\text{Na}_2\text{CO}_3\text{-NaHCO}_3$) coming from the air contactor is fed. The decreasing pH of the solution leads to the conversions of carbonate to hydrocarbonate (**reaction 1**) and hydrocarbonate to carbonic acid (**reaction 2**). When the solution is saturated by dissolved CO_2 (solubility: 0.033 mol L^{-1}), a further pH decrease leads to the release of CO_2 gas (**reaction 3**). H_2 generated in the cathode is introduced to the anode and the solution from the cathode can be reused as a DAC absorbent.

3.3 **Write** the electrode reactions in the anode (A) and the cathode (C) respectively. 2.0 pt

3.4 **Write** the balanced equations for the reactions 1–3 in the acidifying region (B). 3.0 pt

3.5 **Check** all that correctly describe the movement of cations during the system operation. 2.0 pt

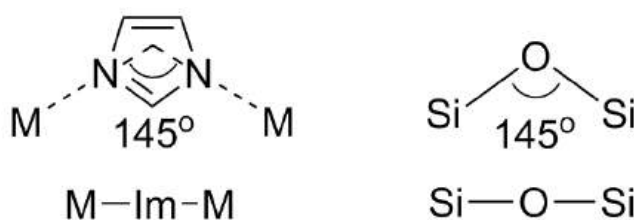
- (a) H^+ ions permeate through M1 from A to B.
- (b) H^+ ions permeate through M2 from B to C.
- (c) Na^+ ions permeate through M1 from B to A.
- (d) Na^+ ions permeate through M2 from B to C.
- (e) Both H^+ and Na^+ ions can permeate through M1 and M2.

The cell works at a steady state when the current passing through the cell is 2.00 A and the flow rate of the solution ($0.050 \text{ mol L}^{-1} \text{ Na}_2\text{CO}_3 - 0.10 \text{ mol L}^{-1} \text{ NaHCO}_3$) into the region B is 10.0 mL min^{-1} . The pH in the anode compartment is maintained at 1 in the steady state.

3.6 **Calculate** the generation rate of CO_2 gas (in mmol min^{-1}). 8.0 pt

Zeolitic imidazolate frameworks (ZIFs), a sub-class of metal–organic frameworks (MOFs) are promising

materials for the capture and utilization of CO₂. The structures of ZIFs resemble zeolites. They form 3D frameworks with tetrahedrally coordinated metal ions (e.g. Zn²⁺, Co²⁺) bridged by imidazolate (Im[−]) and its derivatives. As the conjugated base of imidazole (HIm), imidazolate anion binds to metal cations (M) by its two N atoms. The fact that the M-Im-M angle is similar to the Si-O-Si angle (145°) preferred in zeolites (as shown below) has led to the synthesis of a large number of ZIFs with zeolite-type tetrahedral topologies.



ZIF-8 is one of the representative ZIFs, which adopts a sodalite framework (**SOD**), as shown in **Figure 3.2**. ZIF-8 was firstly synthesized by Chinese scientists Xiao-Ming Chen et al. (they named it as MAF-4) by the reaction of Zn²⁺ with 2-methylimidazole (CH₃(C₃N₂H₃), HmIm). It crystallizes in the cubic system with the cell parameter $a = 1.632$ nm for a solvent-free phase with the effective pore diameter (shown by the inside virtual sphere in **Figure 3.2d**) of 1.16 nm.

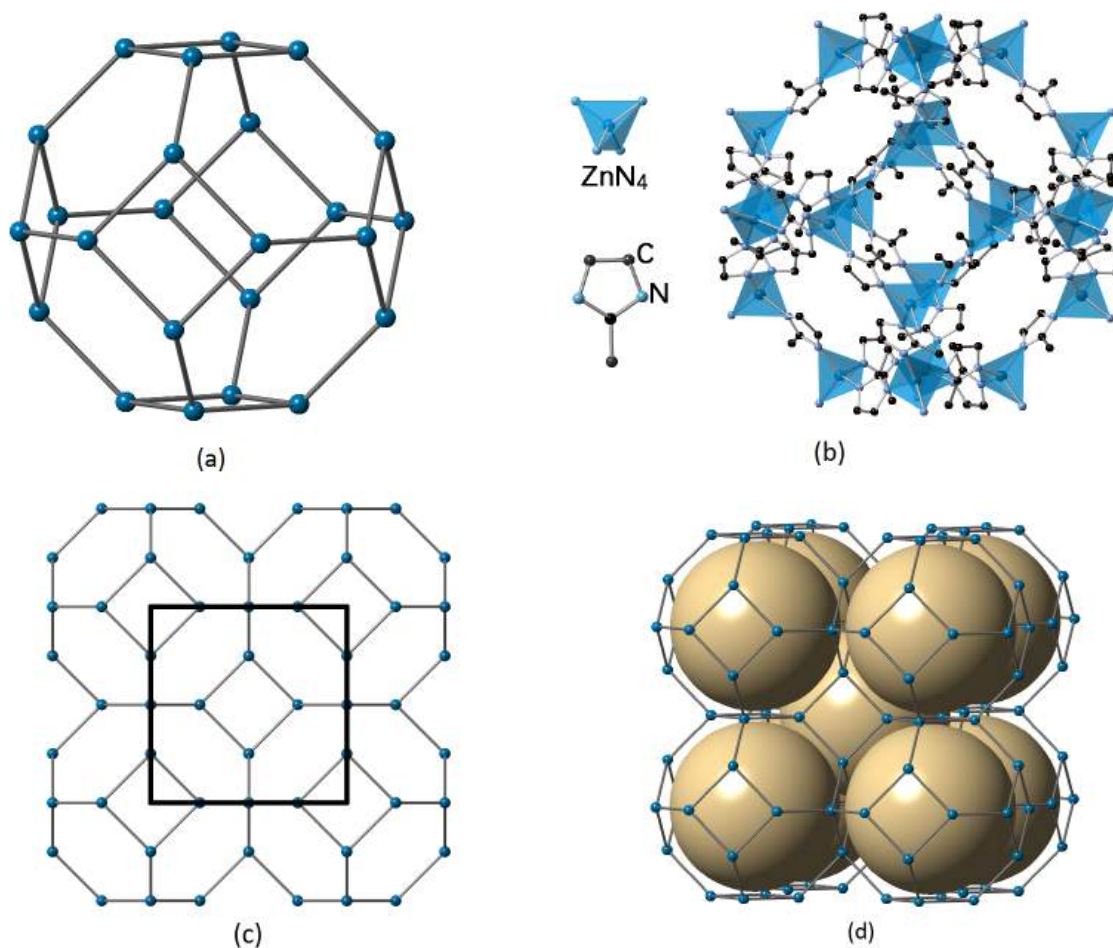


Figure 3.2 Topology of **SOD** and structure of ZIF-8

- (a) Topology of **SOD** cage;
- (b) **SOD** cage in ZIF-8 formed by Zn^{2+} (at the centers of the tetrahedra) and imidazolate (H atoms are omitted for clarity);
- (c) Framework of **SOD** with the unit cell shown by the square box;
- (d) Some of the pores are highlighted by virtual spheres in ZIF-8.

Note: If you wish, you may use the symbol "HmIm" and "mIm" representing 2-methylimidazole and 2-methylimidazolate respectively in solving the following questions.

3.7 Write the formula of the single sodalite cage.

2.0 pt



3.8 **Write** the composition of the unit cell of ZIF-8.

2.0 pt

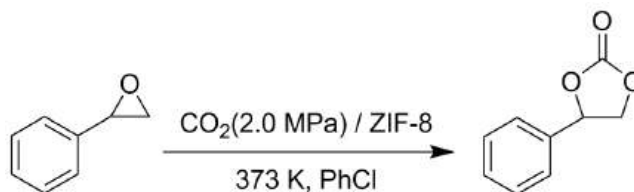
3.9 **Calculate** the inner surface area (S) of the pores (modeled by the virtual spheres) of 1 g ZIF-8 (in m^2). If you failed to get the composition of the unit cell, use 3500 as the formula weight of the unit cell.

5.0 pt

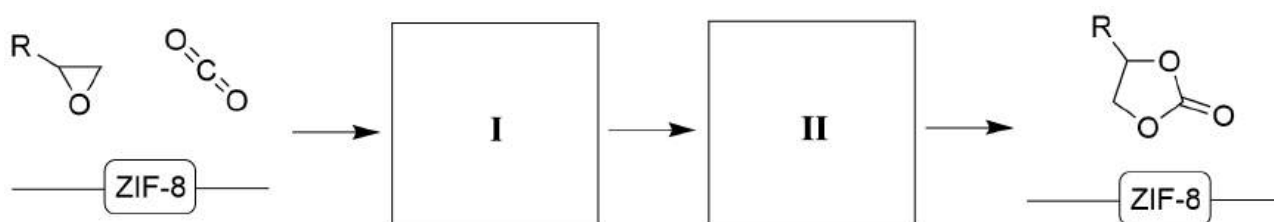
3.10 **Calculate** the porosity R of ZIF-8 (R is the ratio of pore volume to the actual volume of the material) and the pore volume of 1 g ZIF-8 (V_p , in cm^3).

7.0 pt

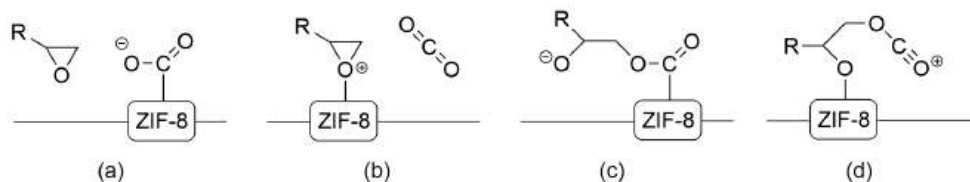
ZIF-8 can also act as a catalyst to promote the conversion of CO_2 to high value-added chemicals. One of the most promising routes for CO_2 fixation is the preparation of cyclic carbonates *via* CO_2 cycloaddition. An example is shown as below:



A mechanism of catalytic conversion of CO_2 to cyclic carbonate over ZIF-8 catalyst is proposed:



3.11 If ZIF-8 provides acid sites in the above catalytic process, complete the mechanism by choosing the reasonable intermediates from the following species: 2.0 pt



Choose the intermediates corresponding to **I** and **II** respectively.

ZIF-8 shows a relatively high thermal stability. However, a recent study revealed that its structure would be destroyed if applied in a wet acidic environment. The co-existence of CO_2 and H_2O with ZIF-8 resulted in the formation of ZnCO_3 .

3.12 **Write** the balanced equation of ZIF-8 with CO_2 and H_2O .

2.0 pt

Theory



A3-1

English (Official)

Capture and Transformation of Carbon Dioxide

14% of the total													
Question	3.1	3.2	3.3	3.4	3.5	3.6	3.7	3.8	3.9	3.10	3.11	3.12	Total
Points	2	5	2	3	2	8	2	2	5	7	2	2	42
Score													

3.1 (2.0 pt)

A: _____

B: _____

3.2 (5.0 pt)

step 1:

step 2:

step 3:

3.3 (2.0 pt)

A:

C:

3.4 (3.0 pt)**reaction 1:****reaction 2:****reaction 3:****3.5** (2.0 pt)☐ (a)☐ (b)☐ (c)☐ (d)☐ (e)



3.6 (8.0 pt)

$r(\text{CO}_2) = \text{_____} \text{ mmol min}^{-1}$

3.7 (2.0 pt)

3.8 (2.0 pt)

3.9 (5.0 pt)

$$S = \text{_____} \text{ m}^2$$

3.10 (7.0 pt)

$$R = \text{_____}; V_p = \text{_____} \text{ cm}^3$$

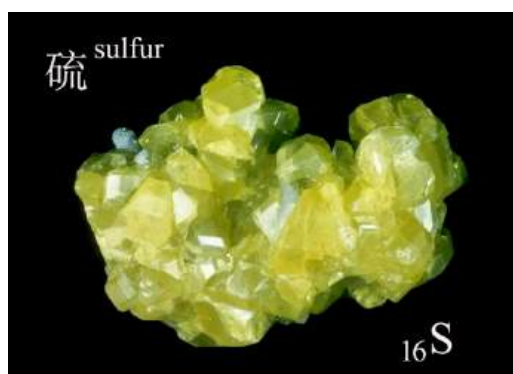
3.11 (2.0 pt)

I: ☐ (a) ☐ (b) ☐ (c) ☐ (d)
 II: ☐ (a) ☐ (b) ☐ (c) ☐ (d)

3.12 (2.0 pt)

A New Journey for Ancient Sulfur

16% of the total													
Question	4.1	4.2	4.3	4.4	4.5	4.6	4.7	4.8	4.9	4.10	4.11	4.12	Total
Points	2	4	4	3	1	5	2	4	5	4	6	5	45
Score													



Sulfur has been known and used since the ancient times. Nowadays, sulfur is widely used in chemical production and pharmaceutical industry as an inexpensive chemical raw material.

Pyrite (FeS_2) is commonly used as a raw material in the industrial production of elemental sulfur. By heating pyrite in the presence of limited air supply, the theoretical yield of elemental sulfur is 100% and a black magnetic oxide (Fe_3O_4) is the other product.

4.1 Write the balanced reaction equation that describes the above conversion. 2.0 pt

In addition to sulfur, a small amount of SO_2 is generated as a by-product during the actual process. This reaction can be monitored by measuring the amount of SO_2 . The following recipe is used for the monitoring:

Raw ore powder is heated in a temperature-controlled tube furnace. The generated SO_2 is absorbed by 2 mol L^{-1} NaOH solution. When the reaction is completed, the solution is transferred to a 500 mL volumetric flask and diluted by distilled water to the mark. 25.00 mL of this diluted solution is then added into an iodine flask containing 50.00 mL $0.05122 \text{ mol L}^{-1}$ I_2 standard solution and 5 mL 20% H_2SO_4 solution. After maintaining the iodine flask in dark for 5 min, the solution is titrated with $0.1012 \text{ mol L}^{-1}$ $\text{Na}_2\text{S}_2\text{O}_3$.

standard solution. When the color of the solution turns light brown, 3 mL 0.5% starch indicator is added. Continue the titration until the blue color disappears.

4.2 **Write** the balanced reaction equations involving I_2 in the above measurement. 4.0 pt

4.3 In such a test experiment starting from pyrite, 17.6 g of elemental sulfur was collected. The analysis of the by-product gases according to the above procedure resulted in the consumption of 18.47 mL of $Na_2S_2O_3$ standard solution. Assuming that no other sulfur containing species were produced, **calculate** what percentage of the sulfur in pyrite was lost as the by-product? 4.0 pt

The lithium-sulfur battery is a compelling energy storage system because its high theoretical energy density exceeds conventional Li-ion batteries. The net reaction of a lithium-sulfur battery can be simplified as: $16Li + S_8 \longrightarrow 8Li_2S$. Sulfur is the cathode and metallic lithium is the anode active material during discharge.

4.4 **Write** the balanced equations for reactions that take place at cathode (**a**) and anode (**b**) during discharge. 3.0 pt

4.5 **Calculate** the mass ratio of the cathode active material to the anode active material, according to the net battery reaction. 1.0 pt

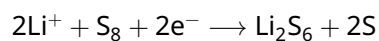
A lithium-ion battery (LIB) that possesses an average operating voltage of 3.8 V and a deliverable capacity of 3110 mAh can provide energy for a mobile phone to play videos continuously for 22 hours upon a full charge.

4.6 If the LIB is replaced by an ideal lithium-sulfur battery pack, which has an average operating voltage of 4.2 V and contains 23 g sulfur as the active electrode material that can react stoichiometrically during discharge, **calculate** how many hours the new battery pack will provide energy for the phone to play videos continuously after a full charge. 5.0 pt

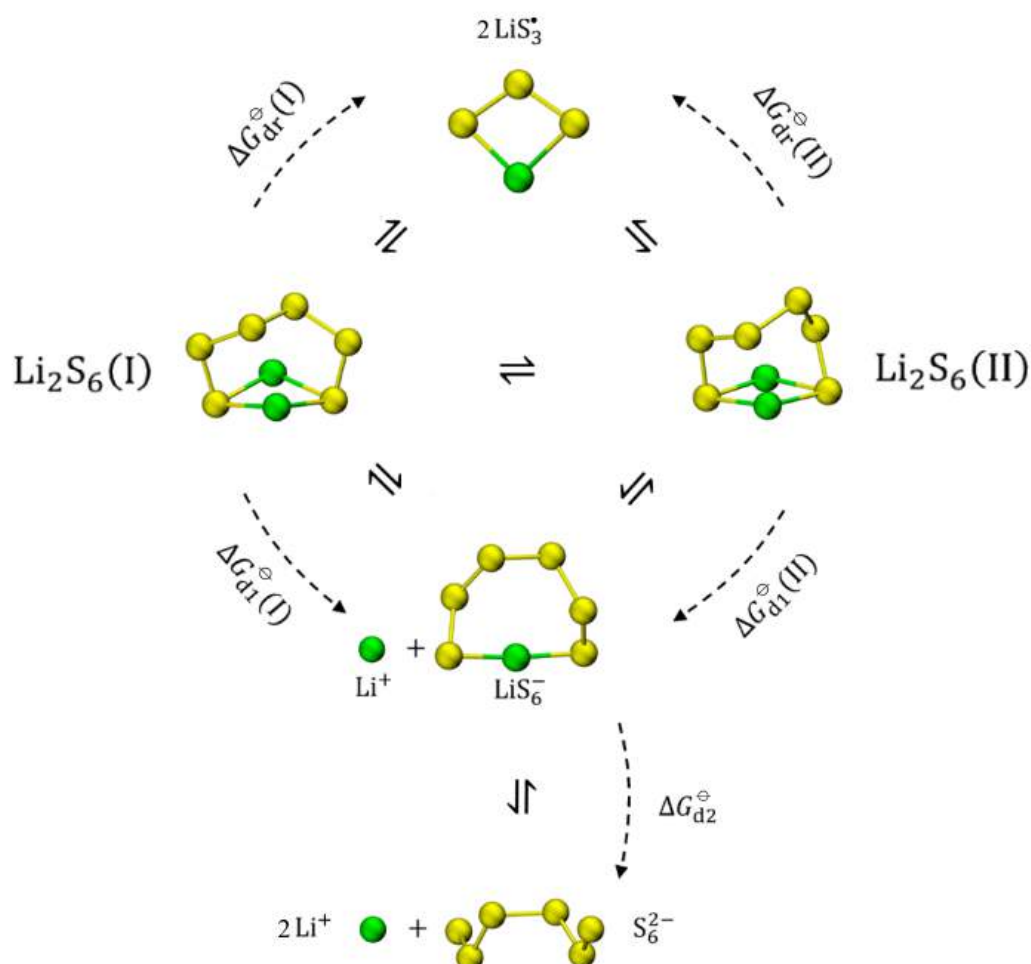
Elemental sulfur generally exist as S_8 molecules. In real lithium-sulfur batteries, S_8 is not directly reduced to Li_2S during discharge, but it undergoes stepwise reactions generating different soluble lithium polysulfides (Li_2S_n , $n = 3 - 8$). These lithium polysulfides could diffuse to the anode and corrode it, which results in the loss of active electrode materials. This phenomenon is called "shuttle effect".

4.7 **Write** the balanced reaction equation for the corrosion of anode by soluble lithium polysulfides (Li_2S_n) that produces Li_2S . 2.0 pt

In order to suppress the "shuttle effect", the forms of polysulfides in an electrolyte have been extensively studied. Li_2S_6 is one of the most representative intermediate products:



A theoretical study shows that two conformers with comparable energies, $\text{Li}_2\text{S}_6(\text{I})$ and $\text{Li}_2\text{S}_6(\text{II})$ coexist in 1,2-dimethoxyethane (DME), a common electrolyte solvent in lithium-sulfur batteries. The dissociation of Li_2S_6 in DME is shown below:



Chemical equilibria of Li_2S_6 , LiS_6^- , S_6^{2-} and LiS_3^\bullet in DME

Table 4.1 Dissociation Gibbs energies (kJ mol^{-1}) of different reactions in DME (298.15 K, 1 bar)

$\Delta G_{\text{d1}}^\ominus(\text{I})$	$\Delta G_{\text{d1}}^\ominus(\text{II})$	$\Delta G_{\text{d2}}^\ominus$	$\Delta G_{\text{dr}}^\ominus(\text{I})$	$\Delta G_{\text{dr}}^\ominus(\text{II})$
20.68	18.92	100.55	45.13	43.37

Theory



Q4-4

English (Official)

- 4.8** Using the data from **Table 4.1**, **calculate** the equilibrium concentration ratio of two conformers in DME (298.15 K, 1 bar), $\frac{[\text{Li}_2\text{S}_6(\text{II})]}{[\text{Li}_2\text{S}_6(\text{I})]}$. 4.0 pt

- 4.9** Using the data from **Table 4.1**, **calculate** the apparent dissociation constant of $\text{Li}_2\text{S}_6 \rightarrow \text{Li}^+ + \text{LiS}_6^-$ in DME (298.15 K, 1 bar). 5.0 pt

- 4.10** **Sort** the following equilibrium concentrations in decreasing order: $[\text{Li}_2\text{S}_6]$, $[\text{LiS}_6^-]$, $[\text{S}_6^{2-}]$, $[\text{LiS}_3^-]$ in DME. 4.0 pt

- 4.11** The standard reduction potential of metallic lithium in water at 298.15 K and 1 bar is: 6.0 pt

$$E^\ominus (\text{Li}^+/\text{Li}) = -3.040 \text{ V}$$

The standard solvation Gibbs energies of gaseous $\text{Li}^+(\text{g})$ to $\text{Li}^+(\text{sol})$ in different solvents.

	$\text{Li}^+(\text{H}_2\text{O})$	$\text{Li}^+(\text{DME})$
$\Delta G^\ominus / \text{kJ mol}^{-1}$	-116.9	-114.6

Calculate the standard reduction potential of metallic lithium electrode in DME.

Studies have shown that electromotive force of a lithium-sulfur battery would be increased by replacing DME with dimethyl sulfoxide (DMSO). Therefore, the forms of polysulfides in DMSO also attract researchers' attention.

In a test, a certain amount of Li_2S and 4.81 mg sulfur powder were added into 10.00 mL DMSO, then heated and stirred until completely dissolved (ignoring the change in volume). Suppose that only the following polysulfides were present in the DMSO: S_3^{2-} , S_4^{2-} , S_5^{2-} , S_6^{2-} , S_7^{2-} , S_8^{2-} . The equilibrium concentration ratio of the sulfur containing species was:

$$[\text{S}_3^{2-}] : [\text{S}_4^{2-}] : [\text{S}_5^{2-}] : [\text{S}_6^{2-}] : [\text{S}_7^{2-}] : [\text{S}_8^{2-}] = 17.50 : 1.00 : 4.50 : 55.00 : 5.00 : 0.75$$

- 4.12** **Calculate** the original mass m (in mg) of Li_2S added to DMSO. 5.0 pt

Theory



54th IChO2022
International Chemistry Olympiad
TIANJIN, CHINA

A4-1

English (Official)

A New Journey for Ancient Sulfur

16% of the total													
Question	4.1	4.2	4.3	4.4	4.5	4.6	4.7	4.8	4.9	4.10	4.11	4.12	Total
Points	2	4	4	3	1	5	2	4	5	4	6	5	45
Score													

4.1 (2.0 pt)

4.2 (4.0 pt)

4.3 (4.0 pt)

_____ %

Theory



54th IChO2022
International Chemistry Olympiad
TIANJIN, CHINA

A4-2

English (Official)

4.4 (3.0 pt)

(a)

(b)

4.5 (1.0 pt)

mass ratio: _____

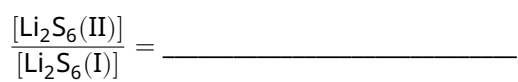
4.6 (5.0 pt)

_____h



4.7 (2.0 pt)

4.8 (4.0 pt)



4.9 (5.0 pt)



4.10 (4.0 pt)

(1) _____ > (2) _____ > (3) _____ > (4) _____



4.11 (6.0 pt)

$E^{\ominus}(\text{Li}^+(\text{DME})/\text{Li}) = \text{_____ V}$

4.12 (5.0 pt)

$m(\text{Li}_2\text{S}) = \text{_____ mg}$



Interconversion among Nitrogen Oxides

15% of the total											
Question	5.1	5.2	5.3	5.4	5.5	5.6	5.7	5.8	5.9	5.10	Total
Points	4	4	2	4	3	8	4	6	4	6	45
Score											

Nitrogen oxides (including N_2O , NO , NO_2 , N_2O_4 and etc., usually written as NO_x) are one of the main air pollutants that can cause a series of problems such as ozone depletion, acid rain, photochemical smog, and greenhouse effect. Therefore, the emission and conversion of NO_x must be controlled to improve air quality. Here let us investigate the oxidation of NO to NO_2 *via* the reaction of $2\text{NO} + \text{O}_2 \rightarrow 2\text{NO}_2$.

Part A

It is generally accepted that this reaction proceeds through the following mechanism in the atmosphere:



Reaction (1) and (2) and the reverse of reaction (1) are elementary reactions. Reaction (1) is a pre-equilibrium reaction, and its equilibrium constant in terms of concentrations is denoted as K_{c1} . Reaction (2) is the rate-determining step of the overall reaction, and its rate constant is k_2 .

5.1 Deduce the rate expression for the overall reaction of $2\text{NO} + \text{O}_2 \rightarrow 2\text{NO}_2$ as a function of $[\text{NO}]$, $[\text{O}_2]$, K_{c1} and k_2 . 4.0 pt

The temperature dependence of K_{c1} could be approximately described as $\ln K_{c1} = M - (N/T)$ (M and N are constants). The change of k_2 with temperature follows the Arrhenius equation with the pre-exponential factor of A_2 and apparent activation energy of $E_{a,2}$. Assume that $E_{a,2}$ and A_2 are independent of the temperature.

5.2 Deduce the expressions for the pre-exponential factor (A_+) and apparent activation energy (E_{a+}) of the reaction of $2\text{NO} + \text{O}_2 \rightarrow 2\text{NO}_2$ as functions of M , N , A_2 and $E_{a,2}$. 4.0 pt

Theory



Q5-2

English (Official)

The apparent rate constant (k_+) of the overall reaction is $6.63 \times 10^5 \text{ L}^2 \text{ mol}^{-2} \text{ min}^{-1}$ at 600 K, and its apparent activation energy is 1.20 kJ mol^{-1} .

5.3 Calculate the rate constant (in $\text{L}^2 \text{ mol}^{-2} \text{ min}^{-1}$) of this reaction at 700 K. 2.0 pt

The standard enthalpies of formation ($\Delta_f H_m^\ominus$) and standard entropies (S_m^\ominus) at 298.15 K are as follows:

	NO(g)	O ₂ (g)	NO ₂ (g)
$\Delta_f H_m^\ominus (\text{kJ mol}^{-1})$	91.3		33.1
$S_m^\ominus (\text{J K}^{-1} \text{ mol}^{-1})$	210.8	205.2	240.1

The standard reaction enthalpy and entropy changes of $2\text{NO} + \text{O}_2 \rightarrow 2\text{NO}_2$ can be regarded as temperature independent. All the gases are taken to be ideal for the following questions.

5.4 Calculate the thermodynamic equilibrium constant (K_p^\ominus) of this reaction at 600 K. 4.0 pt

5.5 Calculate the standard internal energy change $\Delta_r U_m^\ominus$ (in kJ mol^{-1}) of this reaction at 600 K. 3.0 pt

Experimental observation shows that the rate of the reaction of $2\text{NO}_2 \rightarrow 2\text{NO} + \text{O}_2$ is independent on the concentration of NO and O₂.

5.6 Deduce the expression of the rate for this reaction (the apparent rate constant could be directly used as k_-) and **calculate** the value of k_- apparent at 600 K. (If you failed to find the K_p^\ominus (600 K) in question 5.4, use K_p^\ominus (600 K) = 350.0) 8.0 pt

NO₂ gas is introduced to a container with a fixed volume which is held at 600 K and allowed to reach equilibrium. 20 percent of the reactant is converted to NO and O₂. All the gases are taken to be ideal.

5.7 Calculate the total pressure of this reaction system at equilibrium. (If you failed to find the K_p^\ominus (600 K) in question 5.4, use K_p^\ominus (600 K) = 350.0) 4.0 pt

Part B

Industrial exhaust is a main source of NO_x. One of the approaches to reduce the emission of NO_x is through the oxidation of NO to NO₂ and the subsequent absorption of the formed NO₂ by absorbents. However, because of the low concentration of NO in exhaust, its spontaneous oxidation in the atmosphere is too slow to meet the demand of industry. Generally, solid catalysts are used to accelerate this reaction. The NO oxidation proceeds on the surface of a specific catalyst (**CatX**) through the following mechanism (adsorption site is denoted as Site):



$$r_{S+1} = k_{S+1} [\text{O}_2] \theta_v^2 \quad r_{S-1} = k_{S-1} \theta_{\text{O}}^2$$



$$r_{S+2} = k_{S+2} [\text{NO}] \theta_v \quad r_{S-2} = k_{S-2} \theta_{\text{NO}}$$



$$r_{S+3} = k_{S+3} [\text{NO}] \theta_{\text{O}}$$



$$r_{S+4} = k_{S+4} \theta_{\text{NO}_2} \quad r_{S-4} = k_{S-4} [\text{NO}_2] \theta_v$$

Assume that the adsorptions of NO, NO₂ and O (from the dissociation of O₂) cannot proceed beyond a monolayer coverage, and these species are adsorbed by the same kind of surface sites. Their fractional coverages (θ , defined as the ratio of the number of adsorption sites occupied to the number of total adsorption sites) are denoted as θ_{NO} , θ_{NO_2} and θ_{O} , respectively. Thus, the fraction of unoccupied adsorption sites (θ_v) is $\theta_v = 1 - \theta_{\text{NO}} - \theta_{\text{NO}_2} - \theta_{\text{O}}$. Assume that all the adsorption and desorption processes are much faster than reaction (S3).

5.8 Deduce the expression for θ_v as a function of $[\text{NO}]$, $[\text{O}_2]$, $[\text{NO}_2]$ and the rate constants involved in reactions (S1)–(S4). 6.0 pt

- 5.9** **Choose** the correct expression for the rate of $2\text{NO}(\text{g}) + \text{O}_2(\text{g}) \longrightarrow 2\text{NO}_2(\text{g})$ at the beginning of the reaction. Assume that the concentration and adsorption of NO_2 are both negligible. 4.0 pt

- (A) $r_{\text{S}+} = \frac{k_{\text{S}+3}(k_{\text{S}+1}/k_{\text{S}-1})^{0.5}[\text{NO}][\text{O}_2]^{0.5}}{1 + (k_{\text{S}+1}[\text{O}_2]/k_{\text{S}-1})^{0.5} + k_{\text{S}+2}[\text{NO}]/k_{\text{S}-2}}$
- (B) $r_{\text{S}+} = \frac{0.5k_{\text{S}+3}(k_{\text{S}+1}/k_{\text{S}-1})^{0.5}[\text{NO}][\text{O}_2]^{0.5}}{1 + (k_{\text{S}+1}[\text{O}_2]/k_{\text{S}-1})^{0.5} + k_{\text{S}+2}[\text{NO}]/k_{\text{S}-2}}$
- (C) $r_{\text{S}+} = \frac{k_{\text{S}+3}(k_{\text{S}+1}/k_{\text{S}-1})[\text{NO}][\text{O}_2]^{0.5}}{1 + k_{\text{S}+1}[\text{O}_2]/k_{\text{S}-1} + k_{\text{S}+2}[\text{NO}]/k_{\text{S}-2}}$
- (D) $r_{\text{S}+} = \frac{k_{\text{S}+4}k_{\text{S}+3}(k_{\text{S}+1}/k_{\text{S}-1})^{0.5}[\text{NO}][\text{O}_2]^{0.5}/k_{\text{S}-4}}{1 + k_{\text{S}+1}([\text{O}_2]/k_{\text{S}-1})^{0.5} + k_{\text{S}+2}[\text{NO}]/k_{\text{S}-2}}$

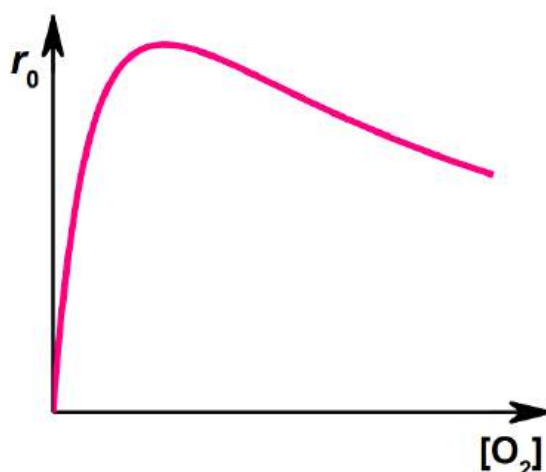
For some catalysts, the surface reaction proceeds via an alternative way instead of reaction (S3):



$$r_{\text{S}+5} = k_{\text{S}+5}\theta_{\text{NO}}\theta_{\text{O}}$$

This step is also rate-determining for the overall reaction.

A catalyst (**CatY**) is used to promote the reaction of $2\text{NO} + \text{O}_2 \longrightarrow 2\text{NO}_2$. When the temperature and NO concentration are constant, the initial reaction rate changes with the concentration of O_2 as follows:



5.10 Choose a mechanism that is consistent with this curve.

6.0 pt

- (A) S3
- (B) S5
- (C) cannot be determined

Interconversion among Nitrogen Oxides

15% of the total											
Question	5.1	5.2	5.3	5.4	5.5	5.6	5.7	5.8	5.9	5.10	Total
Points	4	4	2	4	3	8	4	6	4	6	45
Score											

5.1 (4.0 pt)

$r_+ =$ _____

5.2 (4.0 pt)

$A_+ =$ _____, $E_{a^+} =$ _____

5.3 (2.0 pt)

$$k_+(700\text{ K}) = \text{_____} \text{ L}^2 \text{ mol}^{-2} \text{ min}^{-1}$$

5.4 (4.0 pt)

$$K_p^\ominus(600\text{ K}) = \text{_____}$$



5.5 (3.0 pt)

$$\Delta_r U_m^\ominus = \text{_____} \text{ kJ mol}^{-1}$$

5.6 (8.0 pt)

$$r_- = \text{_____, } k_-(600 \text{ K}) = \text{_____}$$

5.7 (4.0 pt)

p_{total} = _____ kPa



5.8 (6.0 pt)

$\theta_v =$ _____

5.9 (4.0 pt)

☐ (A) ☐ (B) ☐ (C) ☐ (D)

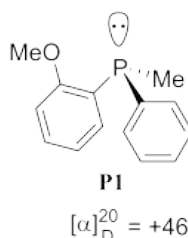
5.10 (6.0 pt)

☐ (A) ☐ (B) ☐ (C)

Enabling Phosphines

7% of the total								
Question	6.1	6.2	6.3	6.4	6.5	6.6	6.7	Total
Points	3	6	8	5	6	3	5	36
Score								

Phosphines are phosphorus analogues of amines. They also carry a lone pair of electrons at the phosphorus atom and thus exhibit Lewis basicity or nucleophilicity. But in contrast with tertiary amines, chiral phosphines like **P1** with three different substituents can be isolated as single enantiomers. Chiral phosphines are often used as chiral ligands in transition metal catalysis.

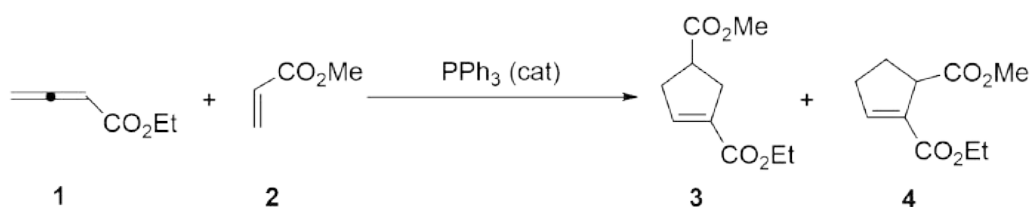


6.1 Using *R/S* symbol, assign the absolute configuration of **P1**.

3.0 pt

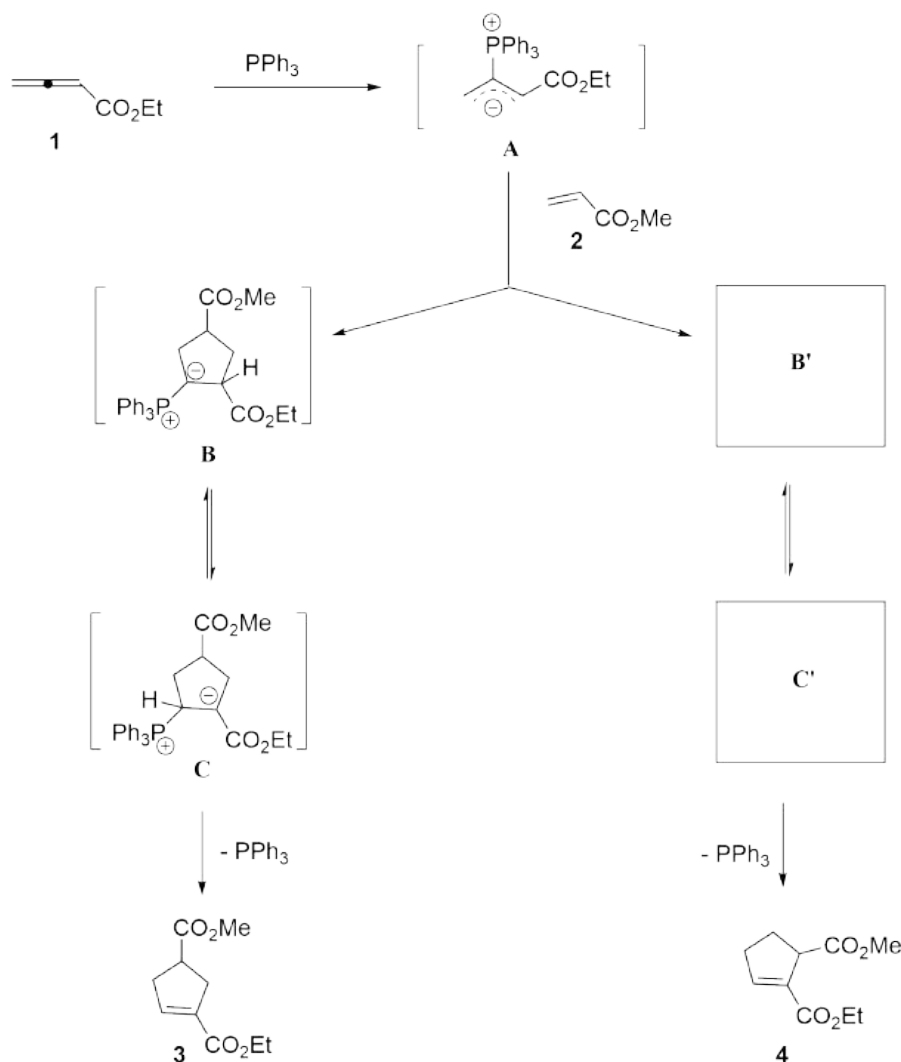
In the past two decades, as organocatalysis grew rapidly, a large number of nucleophilic phosphine-catalyzed synthetic reactions have emerged. Among them, one of the most famous phosphine-catalyzed reactions is the Lu (3+2) cycloaddition reaction, which was first developed by Chinese scientist Xiyan Lu. For instance, under the catalysis of triphenylphosphine, ethyl allenolate **1** and methyl acrylate **2** smoothly produce two cyclopentene derivatives **3** (major) and **4** (minor).

Lu (3+2) cycloaddition:





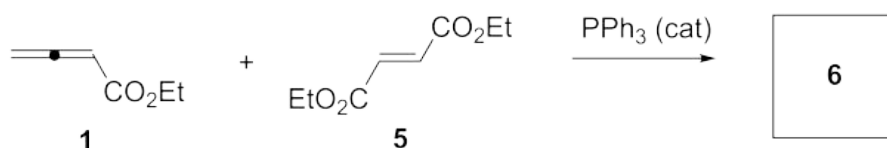
In a generally accepted mechanism, the Lu (3+2) reaction is a *formal* cycloaddition reaction. Initially, the catalyst triphenylphosphine engages in a nucleophilic addition to ethyl allenoate **1** to generate a zwitterionic intermediate **A**, which subsequently cyclizes with methyl acrylate **2** by two paths. In the path leading to compound **3**, an *in situ* generated phosphorus ylide intermediate **B** reversibly converts into intermediate **C** *via* proton transfer; **C** undergoes an elimination to deliver the major product **3** and release the phosphine catalyst. In the path leading to compound **4**, a phosphorus ylide intermediate **B'** is formed, which also reversibly converts into intermediate **C'** *via* proton transfer; **C'** undergoes an elimination to give the minor product **4** and regenerate the phosphine catalyst.

Mechanism:

- 6.2** **Draw** the two **major** resonance structures that make up the shown resonance hybrid **A** (the involvement of ester group is not considered, and stereochemistry is not required). 6.0 pt

6.3 Draw the structures of intermediates **B'** and **C'** (stereochemistry is not required). 8.0 pt

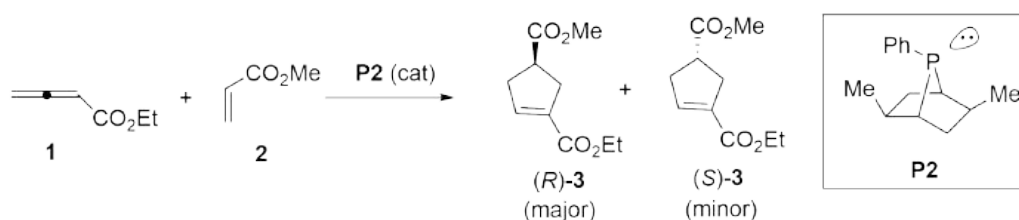
Under similar conditions, ethyl allenoate **1** and diethyl fumarate **5** readily deliver the corresponding cycloaddition product **6**.



6.4 Draw the structure of compound **6** (stereochemistry is not required). 5.0 pt

Asymmetric Lu (3+2) cycloaddition reaction can be readily realized by utilizing chiral phosphine catalysts. For example, under the catalysis of a chiral bicyclic phosphine **P2**, ethyl allenoate **1** and methyl acrylate **2** smoothly delivered an enantio-enriched cycloaddition product **3** in 80% ee (enantiomeric excess).

Asymmetric Lu (3+2) cycloaddition:



Calculation equation of ee:

$$\text{ee} = \frac{n_{\text{major}} - n_{\text{minor}}}{n_{\text{major}} + n_{\text{minor}}} \times 100\%$$

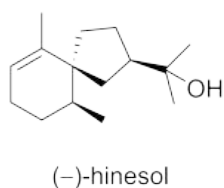
n_{major} = the amount of major enantiomer

n_{minor} = the amount of minor enantiomer

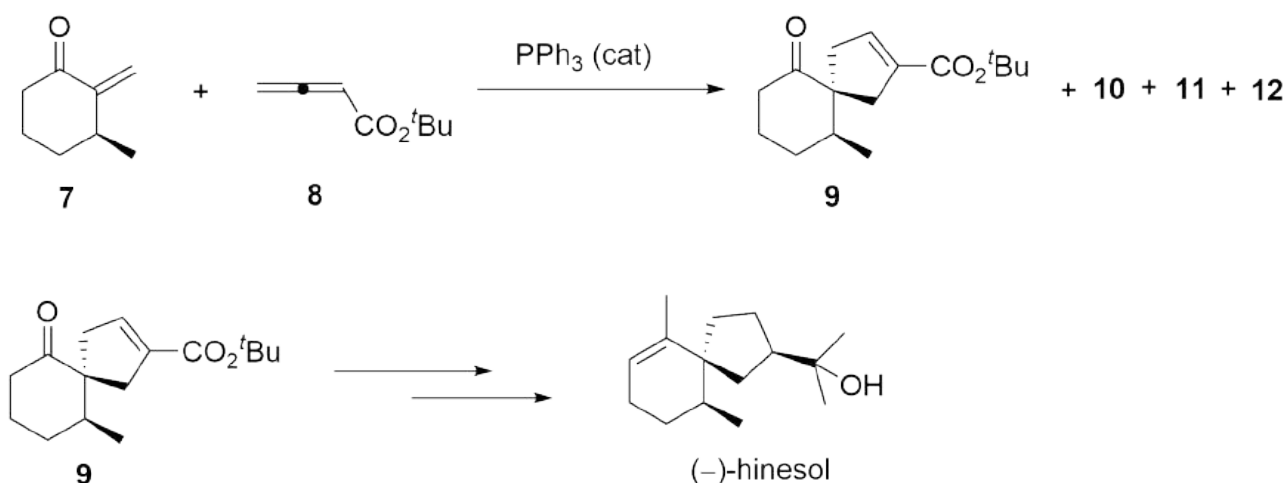
6.5 Mark the chirality centers in the chiral phosphine **P2** by using asterisks. (**Note:** 6.0 pt points will be deducted for every wrong asterisk until 0 points)

6.6 Give the ratio of $n_{\text{major}}/n_{\text{minor}}$ of product **3**. 3.0 pt

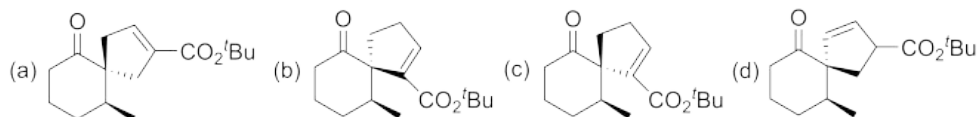
Lu (3+2) cycloaddition reaction is a versatile tool in organic synthesis. For example, it was successfully used to synthesize (–)-hinesol, an important component of the Chinese medicinal herb Chang Zhu (*Atractylodes lancea* var *Chinensis*). Under the catalysis of PPh_3 , a chiral cyclohexanone **7** cyclized with *tert*-butyl allenoate **8**, affording a major product **9** and three minor products **10**, **11** and **12**. Minor products **10–12** are all the isomers of **9**. Compound **9** could be readily transformed into (–)-hinesol by a multistep process.



Chang Zhu



6.7 In the following compounds, **choose** which one **does not** belong to the minor products **10–12**. 5.0 pt



Enabling Phosphines

7% of the total								
Question	6.1	6.2	6.3	6.4	6.5	6.6	6.7	Total
Points	3	6	8	5	6	3	5	36
Score								

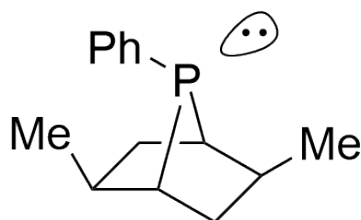
6.1 (3.0 pt)

6.2 (6.0 pt)

**6.3** (8.0 pt)**B'** (4.0 pt)**C'** (4.0 pt)**6.4** (5.0 pt)**6**



6.5 (6.0 pt)



P2

6.6 (3.0 pt)

6.7 (5.0 pt)

☐ (a)

☐ (b)

☐ (c)

☐ (d)

Organic Molecules in Life

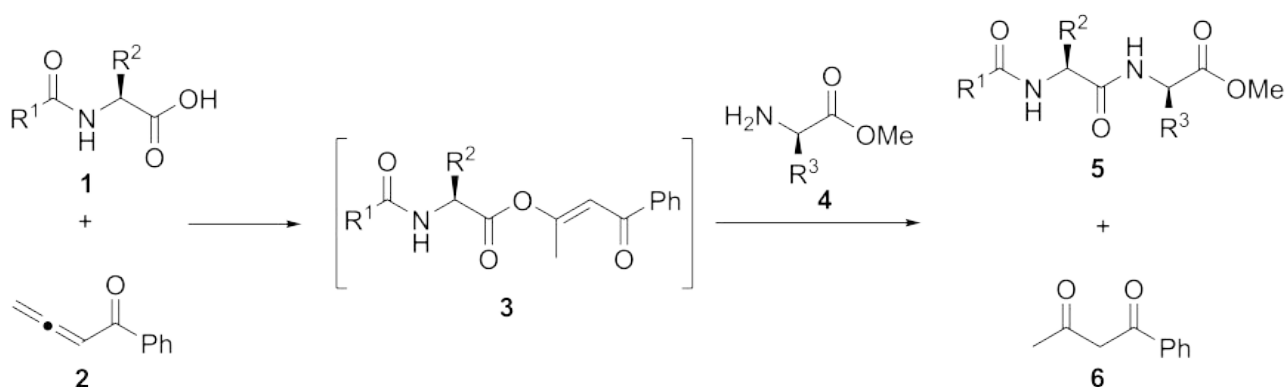
9% of the total				
Question	7.1	7.2	7.3	Total
Points	12	8	12	32
Score				

The synthesis of complex peptides and proteins is a challenging task. On September 17, 1965, Chinese scientists synthesized crystalline bovine insulin artificially for the first time, marking a crucial step in the journey of exploring the secret of life and opening the era of protein synthesis.

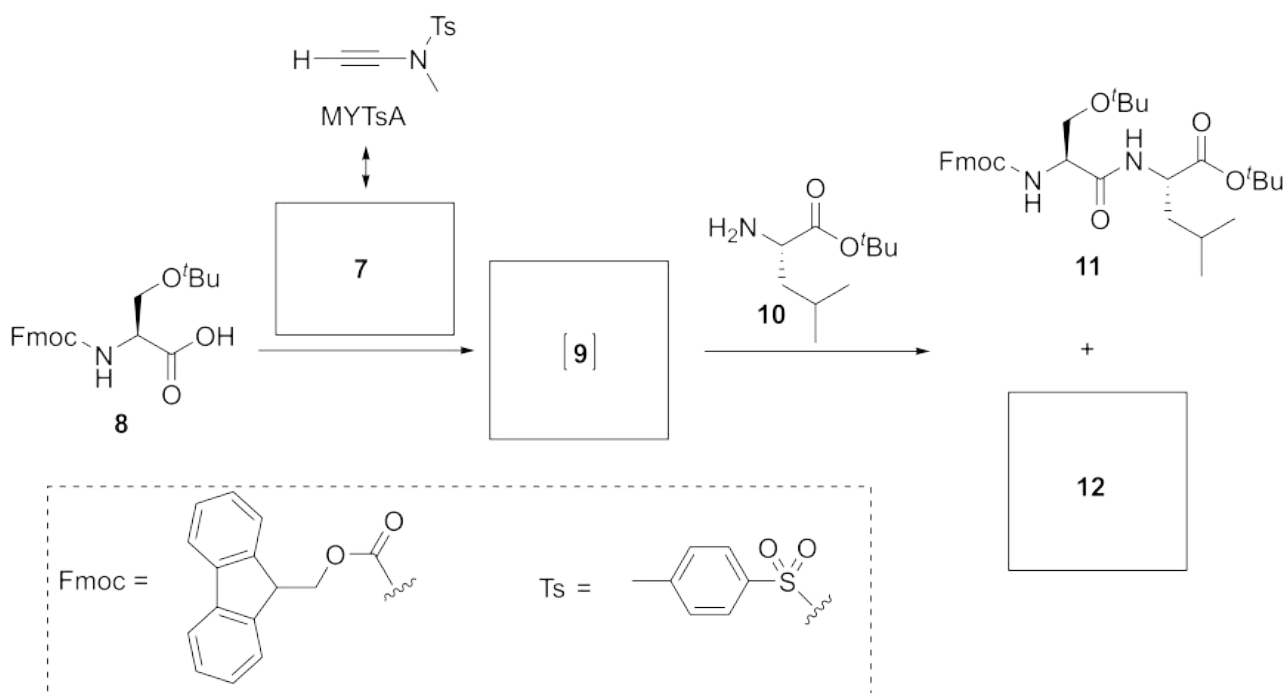


Stamp issued on the 50th anniversary (2015) of the first synthesis of crystalline bovine insulin

Coupling of carboxylic acid groups with amine groups to forge an amide bond is the most elementary reaction in the synthesis of peptides and proteins. Allenone **2** was reported to be able to activate the carboxylic acid **1** under mild reaction conditions forming the intermediate **3**. Intermediate **3** then reacts with amine **4** to give amide **5** with high yield, along with the byproduct **6**.



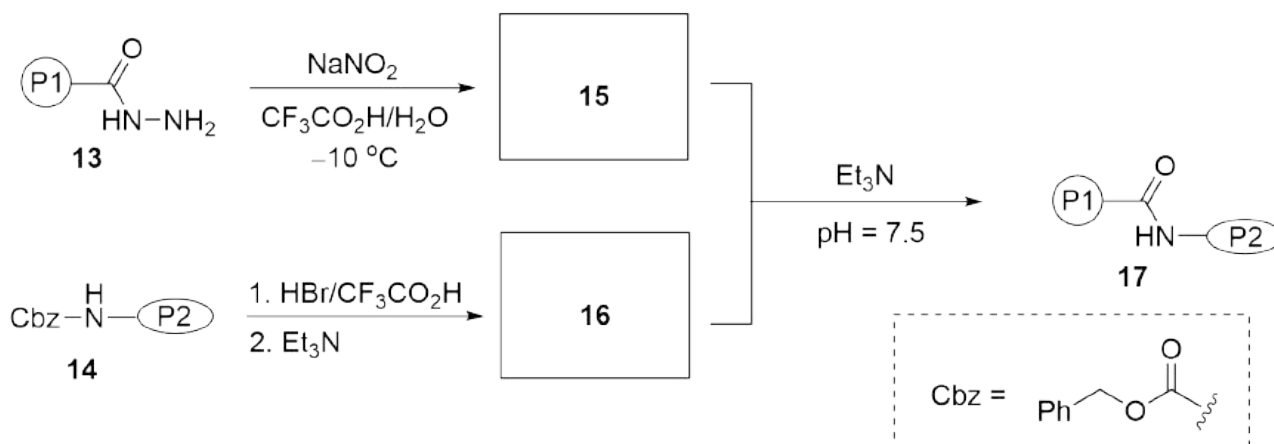
Similarly, *N*-ethynyl-*N*-methyl-*p*-toluenesulfonamide (MYTsA) with its major resonance structure **7** (involvement of Ts group is not considered) can activate carboxylic acid in the same way as allenone **2**.



7.1 **Draw** the structures of **7**, intermediate **9** and compound **12**. Show the stereochemistry of any stereocenters. 12.0 pt

As the length of peptide chain grows, formation of amide bonds becomes more difficult, and conventional condensation methods are not applicable in the synthesis of proteins. In the first synthesis of crystalline bovine insulin, a method based on the chemistry of acylhydrazine **13** was developed to achieve the challenging amide coupling between two peptides. As the following equations, compound **15** reacts

with **16** smoothly in the presence of triethylamine.

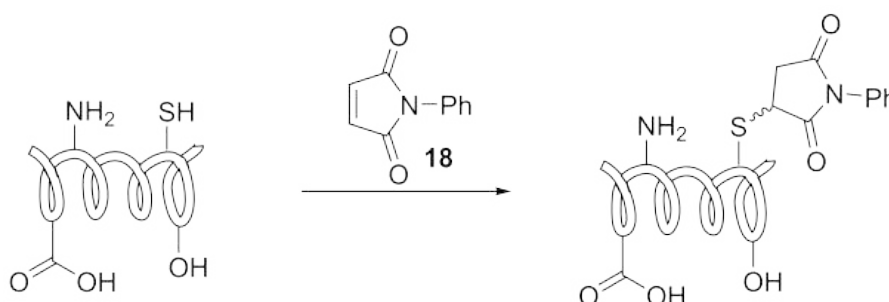


Note: P1, P2 = peptides

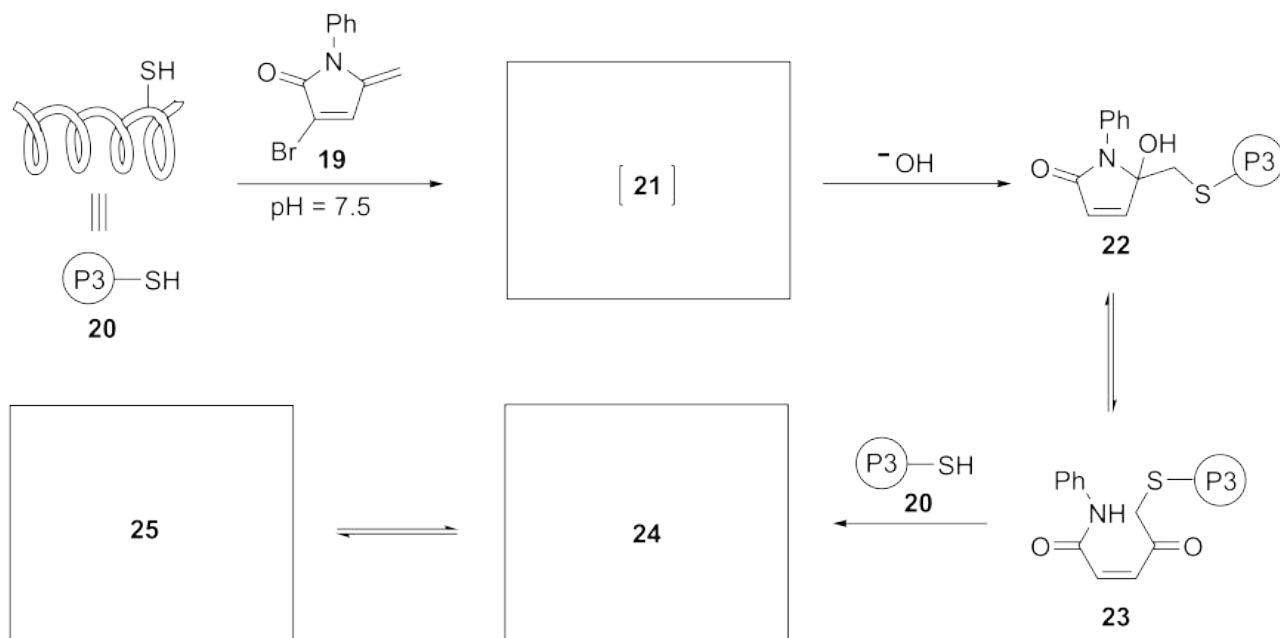
7.2 Draw the structures of compounds **15** and **16**.

8.0 pt

In addition to *de novo* synthesis, scientists can modify existing proteins. Although there are multiple reactive sites on the surface of protein, such as amino groups, thiol groups, and carboxyl groups, the most nucleophilic thiol groups are the preferred site when the protein is treated with electrophilic reagents such as *N*-phenyl maleimide **18** via Michael addition.



Under mild basic conditions (pH = 7.5), reagent **19** was proposed to react with the thiol group of protein **20** to give a neutral intermediate **21** which is attacked by hydroxide to give compound **22**. Compound **22** can equilibrate with an acyclic form **23**, and subsequently react with another protein **20**. The resulting major product can exist either in the acyclic form **24** or in the cyclic form **25** in a similar way as the equilibration between **22** and **23**.



7.3 Draw the structures of intermediate **21**, compounds **24** and **25**. Stereochemistry is not required. 12.0 pt

Theory



A7-1

English (Official)

Organic Molecules in Life

9% of the total				
Question	7.1	7.2	7.3	Total
Points	12	8	12	32
Score				

7.1 (12.0 pt)

7 (4.0 pt)

9 (4.0 pt)

12 (4.0 pt)

7.2 (8.0 pt)

15 (4.0 pt)

16 (4.0 pt)

Theory



A7-2

English (Official)

7.3 (12.0 pt)

21 (4.0 pt)

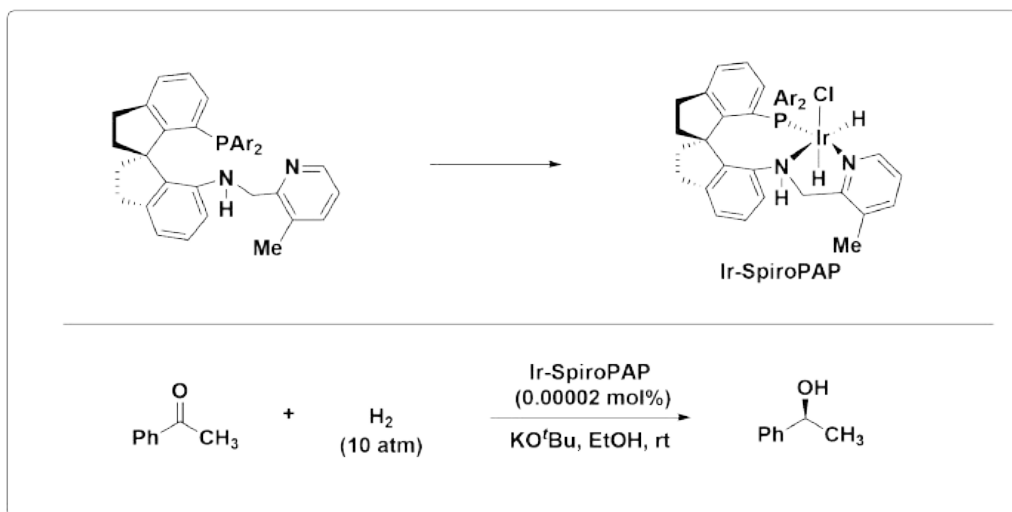
24 (4.0 pt)

25 (4.0 pt)

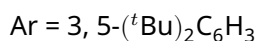
Amazing Chiral Spiro Catalyst

10% of the total									
Question	8.1	8.2	8.3	8.4	8.5	8.6	8.7	8.8	Total
Points	16	2	2	2	2	8	2	2	36
Score									

Chiral compounds are important for human health, for example, more than 50% of the medicines currently in clinical use are single enantiomers of chiral molecules. However, synthesizing chiral molecules in enantio-enriched form is a great challenge. Professor Qilin Zhou's team in Nankai University in China developed a series of chiral spiro catalysts with high activity, raising the efficiency of asymmetric synthesis to a new height, and being widely used in the pharmaceutical industry. These catalysts can give up to (reach up to) 99.9% ee and can be used down to 0.00002 mol% loading. This research result won the first prize of the 2019 National Natural Science Award of China.

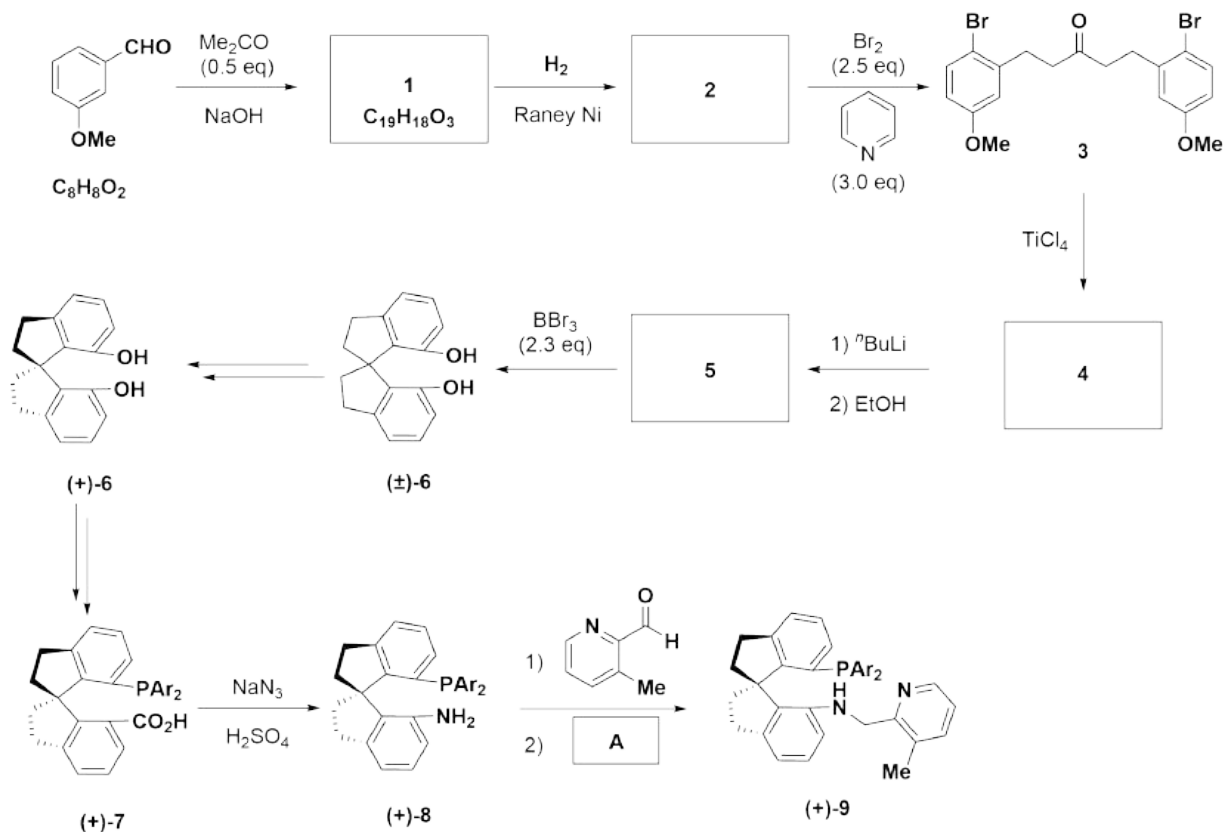


Note:



Part A

The synthetic route of the chiral ligand SpiroPAP is shown in the following scheme.



Note:

eq = equivalent

$\text{Ar} = 3, 5\text{-}(^t\text{Bu})_2\text{C}_6\text{H}_3$

8.1 **Draw** the structures of **1**, **2**, **4**, **5**. (Stereochemistry is not considered)

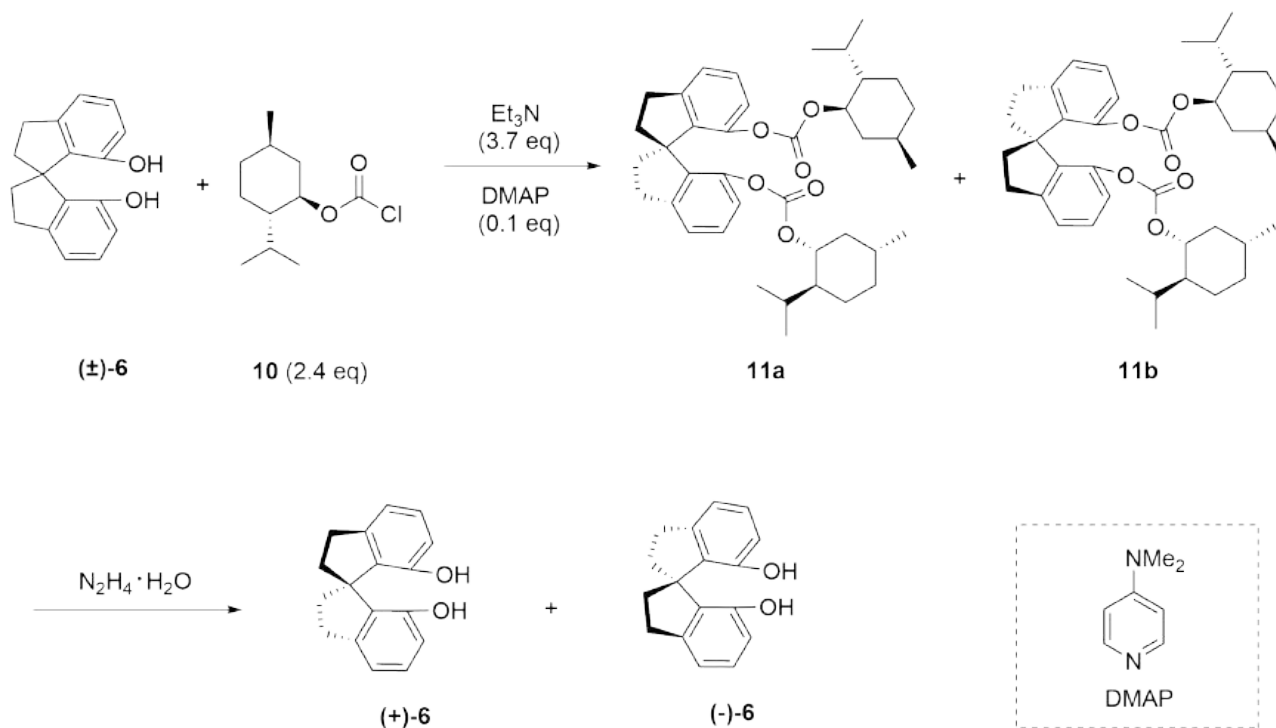
16.0 pt

8.2 From the following reagents, **which** reagent **A** can **NOT** be used for the trans-formation of **8** to **9**?

2.0 pt

- (a) $\text{NaBH}(\text{OAc})_3$
- (b) NaBH_3CN
- (c) NH_2NH_2 , NaOH
- (d) NaBH_4

The racemic spiro compound **6** reacts with (–)-menthyl chloroformate (**10**) to generate compounds **11a** and **11b**, which can be separated by column chromatography, followed by hydrazinolysis to obtain optically pure (+)-**6** and (–)-**6**.

**Note:**

eq = equivalent

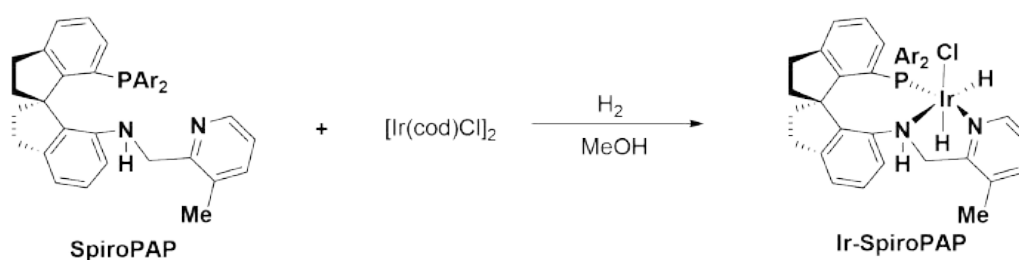
8.3 Choose the correct statement below.

2.0 pt

- (a) Compounds **11a** and **11b** are a pair of enantiomers.
- (b) Compounds **11a** and **11b** are a pair of diastereomers.
- (c) Compounds **11a** and **11b** are a pair of *cis-trans* isomers.
- (d) Compounds **11a** and **11b** are a pair of conformational isomers.

Part B

The Ir-SpiroPAP was prepared by reaction of SpiroPAP with $[\text{Ir}(\text{cod})\text{Cl}]_2$ (cod is cycloocta-1,5-diene) in MeOH under hydrogen as shown below.



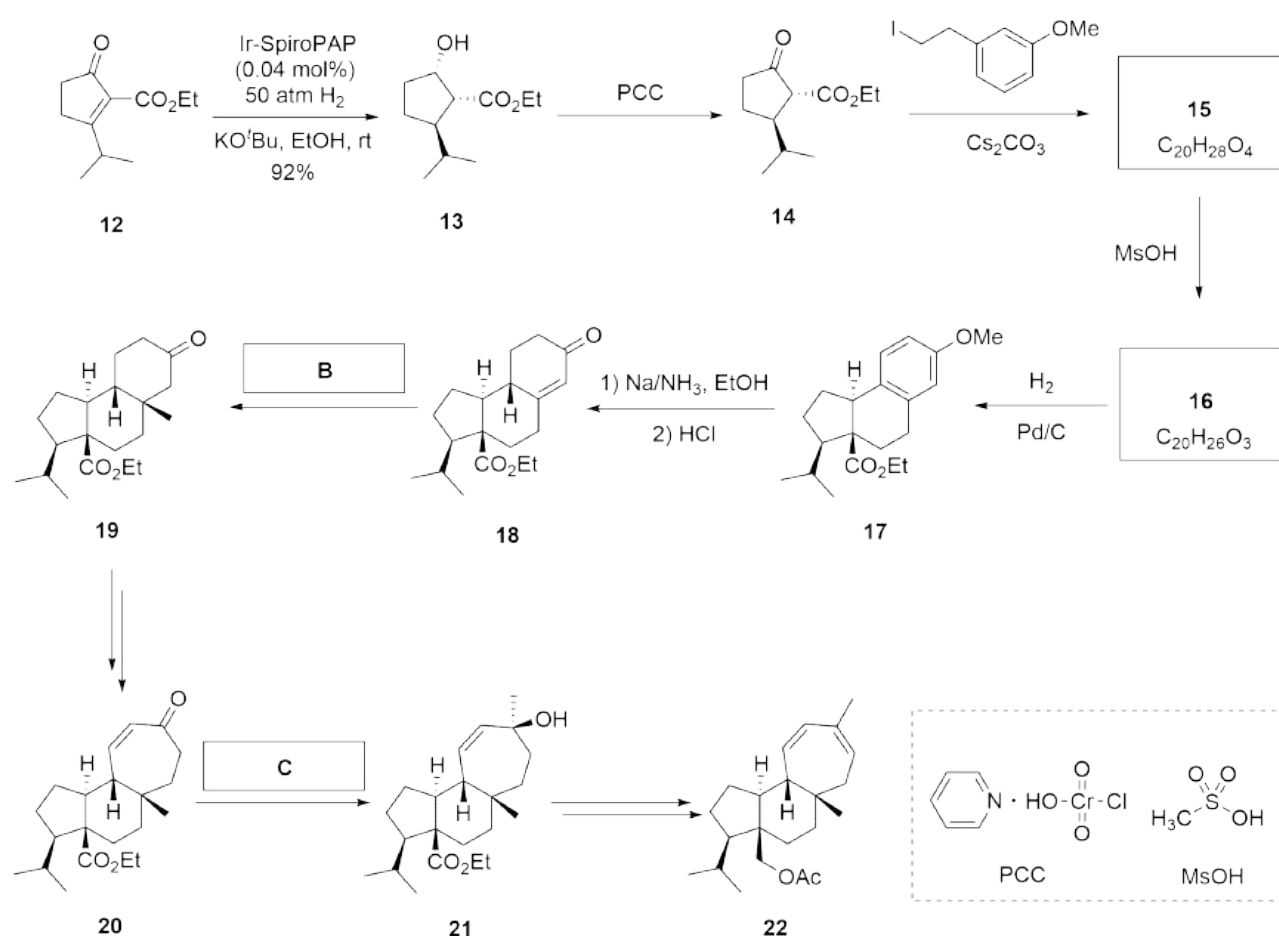
Note:

Ar = 3, 5-(^tBu)₂C₆H₃

8.4 Write the oxidation number of Ir in the catalyst Ir-SpiroPAP. 2.0 pt

8.5 Write the number of valence electrons of d orbitals for metal Ir in the catalyst Ir-SpiroPAP. 2.0 pt

The chiral spiro catalyst Ir-SpiroPAP was used for the asymmetric total synthesis of Mulinane-type diterpene **22** as shown below.



8.6 Draw the structures of **15** and **16**, including the appropriate stereochemistry. 8.0 pt

- 8.7** From the following reagents, **choose** the best for **B**. 2.0 pt
- (a) MeLi/CeCl₃
 - (b) MeLi/CuI
 - (c) MePh₃P⁺I⁻, ⁿBuLi
 - (d) Me₃S⁺I⁻, NaH

- 8.8** From the following reagents, **choose** the best for **C**. 2.0 pt
- (a) MeLi/CeCl₃
 - (b) MeLi/CuI
 - (c) MePh₃P⁺I⁻, ⁿBuLi
 - (d) Me₃S⁺I⁻, NaH

Amazing Chiral Spiro Catalyst

10% of the total									
Question	8.1	8.2	8.3	8.4	8.5	8.6	8.7	8.8	Total
Points	16	2	2	2	2	8	2	2	36
Score									

Part A

8.1 (16.0 pt)

1(4.0 pt)

2(4.0 pt)

4(4.0 pt)

5(4.0 pt)

8.2 (2.0 pt)

[] (a)

[] (b)

[] (c)

[] (d)

Theory



A8-2

English (Official)

8.3 (2.0 pt)

[] (a) [] (b) [] (c) [] (d)

Part B

8.4 (2.0 pt)

8.5 (2.0 pt)

8.6 (8.0 pt)

15(4.0 pt)

16(4.0 pt)

8.7 (2.0 pt)

[] (a) [] (b) [] (c) [] (d)

8.8 (2.0 pt)

[] (a) [] (b) [] (c) [] (d)

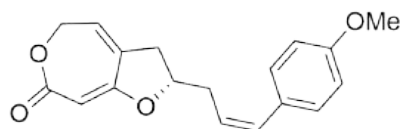
Total Synthesis of Capitulactone

9% of the total					
Question	9.1	9.2	9.3	9.4	Total
Points	24	2	16	2	44
Score					

The plant of *Curculigo capitulata* grows in the Southern China and has long been used in traditional Chinese herbal medicine for the treatment of many diseases. Capitulactone (**1**) was isolated from the roots of *Curculigo capitulata*. Its structure with absolute configuration was unambiguously established by a combination of spectroscopic data and total synthesis.

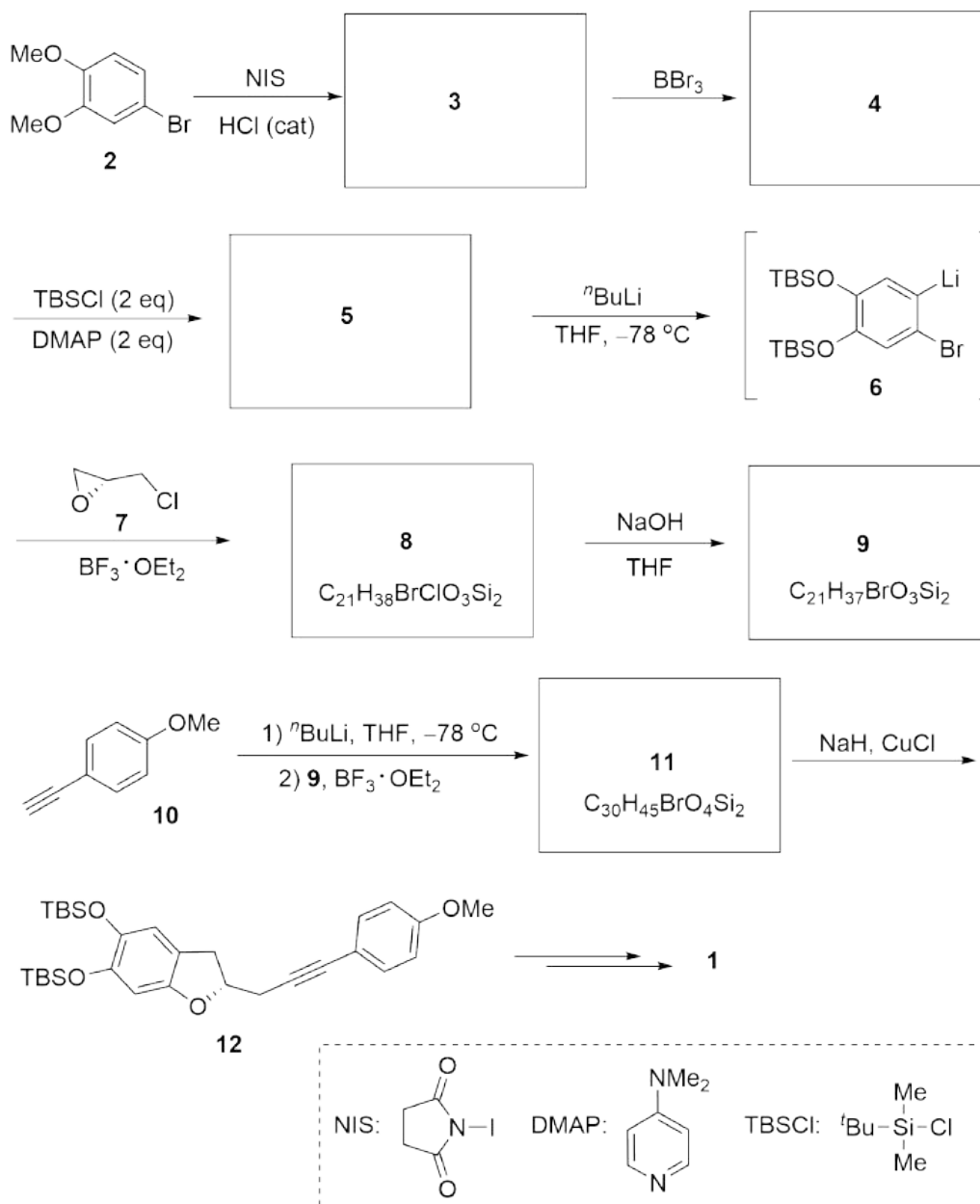


Curculigo capitulata



Capitulactone (**1**)

The total synthesis of **1** began with the iodination of commercially available 4-bromoveratrole **2** through a key intermediate **12** as shown in the following scheme.

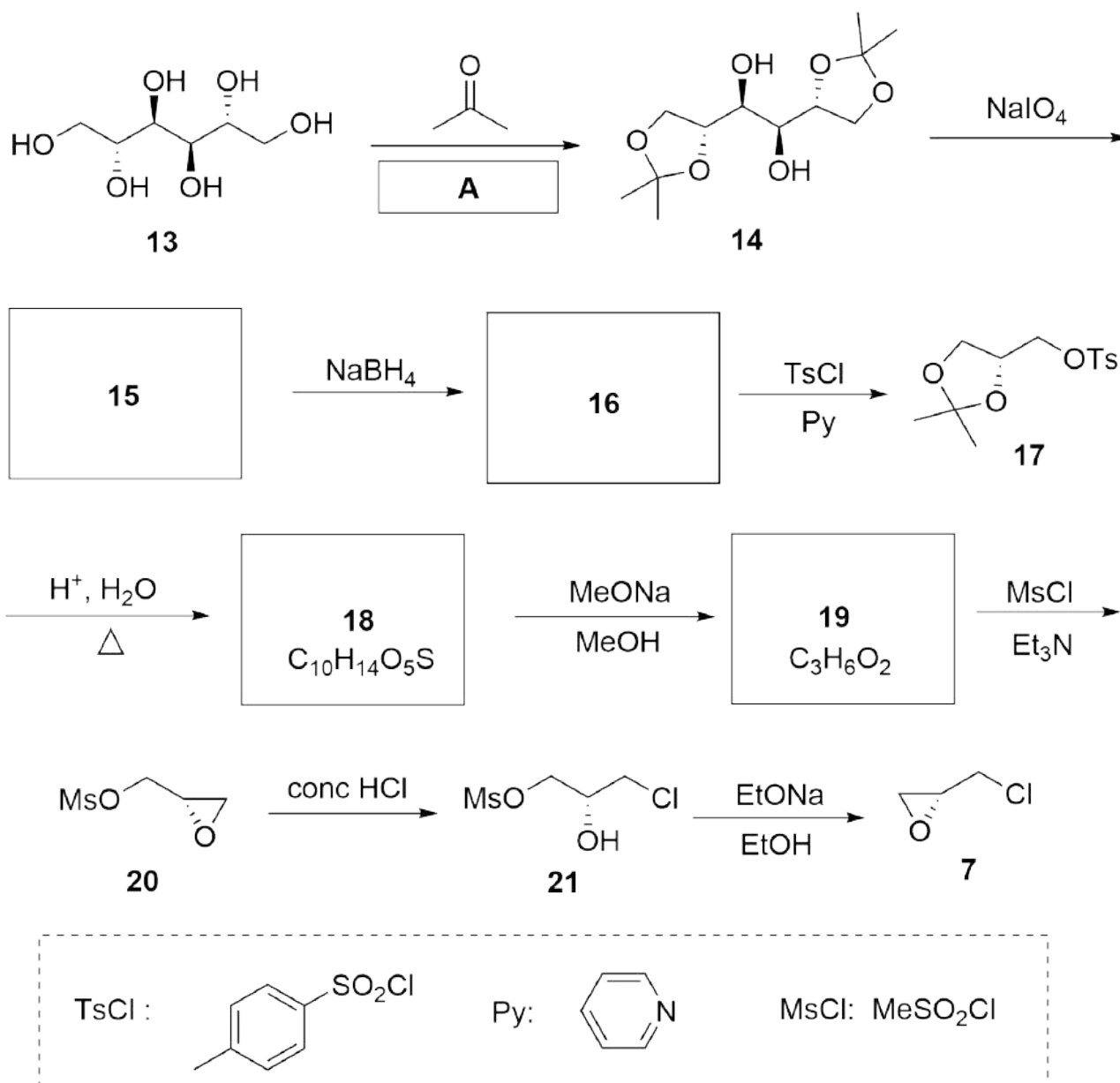
**Note:**

cat = catalyst

eq = equivalent

9.1 **Draw** the structures of compounds **3-5**, **8**, **9** and **11** and show the stereochemistry of any stereocenters. 24.0 pt

(*R*)-Epichlorohydrin (**7**) was prepared from (+)-mannitol (**13**) through a route as shown below.



Note:

eq = equivalent

conc = concentrated



9.2 From the following conditions, **choose** the best for **A**.

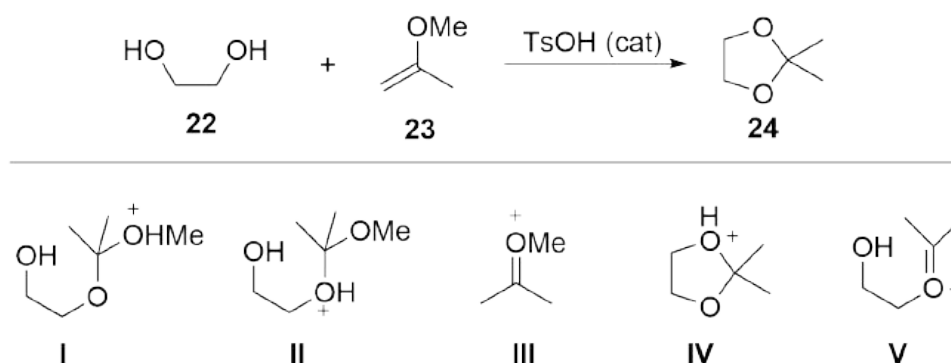
2.0 pt

- (a) Pyridine
- (b) 5% KOH/H₂O
- (c) 1% HCl/H₂O
- (d) Anhydrous ZnCl₂

9.3 **Draw** the structures of intermediate products **15**, **16**, **18** and **19** and show the stereochemistry of any stereocenters.

16.0 pt

The diketal **14** can also be prepared by treating (+)-mannitol (**13**) with 2-methoxypropene (**23**) in the presence of catalytic amount of toluenesulfonic acid (TsOH) in anhydrous toluene. The model reaction is shown below.



9.4 The proposed mechanism for this reaction involves key intermediates (**I-V**) as shown above, **choose** the correct order of the formation of the key intermediates during the reaction process.

2.0 pt

- (a) **I, II, III, IV, V**
- (b) **III, II, I, V, IV**
- (c) **III, I, II, IV, V**
- (d) **III, I, II, V, IV**

Total Synthesis of Capitulactone

9% of the total					
Question	9.1	9.2	9.3	9.4	Total
Points	24	2	16	2	44
Score					

9.1 (24.0 pt)

3 (4.0 pt)

4 (4.0 pt)

5 (4.0 pt)

8 (4.0 pt)

Theory



A9-2

English (Official)

9.1 (cont.)

9 (4.0 pt)

11(4.0 pt)

9.2 (2.0 pt)

☐ (a) ☐ (b) ☐ (c) ☐ (d)

**9.3 (16.0 pt)****15 (4.0 pt)****16 (4.0 pt)****18 (4.0 pt)****19 (4.0 pt)****9.4 (2.0 pt)**☐ (a)☐ (b)☐ (c)☐ (d)

[Marking Scheme] Rapid and Visual Nucleic Acid Testing for COVID-19

1.1 (1.0 pt)

(d)

1.2 (1.0 pt)

(a)

Theory-Marking Scheme



54th IChO 2022
International Chemistry Olympiad
TIANJIN, CHINA

M1-2

English (Official)

1.3 (4.0 pt)

The volume of a gold nanoparticle:

1 point

$$V_{NP} = \frac{4}{3}\pi \left(\frac{D}{2}\right)^3 = \frac{4}{3} \times 3.14 \times \left(\frac{30.0 \times 10^{-7}}{2}\right)^3 = 1.41 \times 10^{-17} \text{ cm}^3 \text{ or } 1.41 \times 10^{-23} \text{ m}^3$$

The mass of a gold nanoparticle:

1 point

$$m_{NP} = \rho V_{NP} = 19.3 \times 1.41 \times 10^{-17} = 2.72 \times 10^{-16} \text{ g}$$

The number of gold atoms in each particle:

2 point

$$N = \frac{m_{NP}}{AW_{Au}} \cdot N_A = \frac{2.72 \times 10^{-16}}{197.0} \times 6.022 \times 10^{23} = 8.31 \times 10^5$$

OR

4 points

$$N = \frac{V_{NP}}{V_{\text{atom}}} = \frac{\pi \rho N_A D^3}{6M} = \frac{3.14 \times 19.3 \times 6.022 \times 10^{23} \times (30.0 \times 10^{-7})^3}{6 \times 197.0} = 8.34 \times 10^5$$

OR

The volume of a gold nanoparticle:

1 point

$$V_{NP} = \frac{4}{3}\pi \left(\frac{D}{2}\right)^3 = \frac{4}{3} \times 3.14 \times \left(\frac{30.0 \times 10^{-7}}{2}\right)^3 = 1.41 \times 10^{-17} \text{ cm}^3 \text{ or } 1.41 \times 10^{-23} \text{ m}^3$$

The mass of each gold atom:

1 point

$$m = \frac{AW_{Au}}{N_A} = \frac{197.0}{6.022 \times 10^{23}} = 3.271 \times 10^{-22} \text{ g}$$

The volume of each gold atom:

1 point

$$V_{\text{atom}} = \frac{m}{\rho} = \frac{3.271 \times 10^{-22}}{19.3} = 1.69 \times 10^{-23} \text{ cm}^3$$

The number of gold atoms in each particle:

1 point

$$N = \frac{V_{NP}}{V_{\text{atom}}} = \frac{1.41 \times 10^{-17}}{1.69 \times 10^{-23}} = 8.34 \times 10^5$$

4 points in total

−1 point for calculating error.

Theory-Marking Scheme



54th IChO 2022
International Chemistry Olympiad
TIANJIN, CHINA

M1-3

English (Official)

1.4 (4.0 pt)

The total number of gold atoms:

1 points

$$N_{\text{Total}} = \frac{5.2 \times 10^{-3}}{394} \times 6.022 \times 10^{23} = 7.9 \times 10^{18}$$

The concentration of gold nanoparticles:

2 points

$$C = \frac{N_{\text{Total}}}{NVN_A} = \frac{7.9 \times 10^{18}}{8.34 \times 10^5 \times 100 \times 10^{-3} \times 6.022 \times 10^{23}} = 1.6 \times 10^{-10} \text{ mol L}^{-1}$$

The extinction coefficient:

1 points

$$\varepsilon = \frac{A}{lC} = \frac{0.800}{1 \times 1.6 \times 10^{-10}} = 5.0 \times 10^9 \text{ L mol}^{-1} \text{ cm}^{-1}$$

4 points in total

−1 point for each calculating error.

1.5 (4.0 pt)

$$A_1 = \varepsilon l C_1 = \varepsilon l \frac{0.10 C_x}{1.0} = 0.400$$

1 point

$$\text{OR} \quad \frac{0.400}{0.900} = \frac{\frac{0.10 C_x}{1.0}}{\frac{0.10 C_x + 2.0 \times 0.10}{1.0}}$$

2 points

$$A_2 = \varepsilon l C_2 = \varepsilon l \frac{0.10 C_x + 2.0 \times 0.10}{1.0} = 0.900$$

1 point

$$C_x = 1.6 \mu\text{g mL}^{-1}$$

2 points

4 points in total

−1 point for calculating error.

[Marking Scheme] Chromium in Ancient and Modern Times**2.1 (2.0 pt)****A: 8 B: 16**

2 points in total, each correct assignment 1 point

2.2 (1.0 pt)

Fe (or iron)

2.3 (6.0 pt)Fe³⁺ : 7, Cr³⁺ : 9**Solution 1:**Assume there are x Fe ions (including Fe²⁺ and Fe³⁺) and y Cr³⁺ ions in a cubic cell, then

$$\frac{x}{y} = \frac{63.6 \times (52.00 \times 2 + 16.00 \times 3)}{36.4 \times (55.85 \times 2 + 16.00 \times 3)}$$

which gives the result: $\frac{x}{y} = 1.66$

Considering that the total amount of the cations in each crystal cell is 24, it can be obtained

$$(1 + 1.66)y = 24$$

which gives the result: $y \approx 9$ Thus, the amount of Fe³⁺ occupying the octahedral vacancies is

$$16 - 9 = 7$$

Solution 2:Assume there are x Fe ions (including Fe²⁺ and Fe³⁺) in the final compound, then, the number of Cr³⁺ should be $3 - x$ because the summary of A+B should be 3 in AB₂O₄, and the formula of the compound should be Fe _{x} Cr _{$3-x$} O₄, then

$$\frac{x}{3 - x} = \frac{63.6 \times (52.00 \times 2 + 16.00 \times 3)}{36.4 \times (55.85 \times 2 + 16.00 \times 3)} = \frac{5}{3}$$

which gives the result: $x = 1.875$ Accordingly, Fe²⁺ in the tetrahedral vacancies is 1, and the number of Fe³⁺ in the octahedral vacancies is

$$x - 1 = 1.875 - 1 = 0.875$$

and the number of Cr³⁺ occupying the octahedral is

$$3 - x = 3 - 1.875 = 1.125$$

In one unit cell, there are 8 Fe²⁺, thus the numbers of Fe³⁺ and Cr³⁺ are

$$\frac{8}{1} \times 0.875 = 7 \quad \text{and} \quad \frac{8}{1} \times 1.125 = 9$$

respectively.

6 points in total

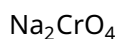
2 points for the correct molar ratio of Fe/Cr

1 point for the correct result of the amount of Cr³⁺

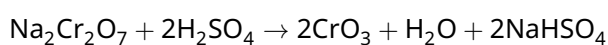
1 point for the correct result of the total amount of Fe

1 point for the correct result of the amount of Fe³⁺1 point for the correct result of the number of Fe³⁺ and Cr³⁺ in the B sites of one unit cell

2.4 (1.0 pt)



2.5 (2.0 pt)



Ionic form is acceptable.

–1 point if the stoichiometry is incorrect.

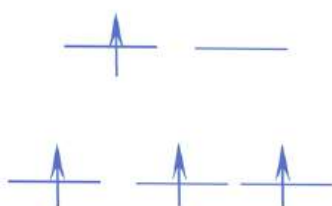
2.6 (1.0 pt)

(A)

2.7 (1.0 pt)

(B)

2.8 (5.0 pt)



$$\text{CFSE} = 0 - E_{\text{octa}} = 0 - [(-2/5\Delta_o) \times 3 + 3/5\Delta_o] = 3/5\Delta_o = 9600 \text{ cm}^{-1}$$

5 points in total

1 point for the correct energy level of the five 3d orbitals in octahedral crystal field.

1 point for the correct electron configuration on the energy level lines.

1 point for the correct equation of CFSE.

1 point for the result of CFSE with Δ_o .

1 point for the result of CFSE with cm^{-1} .

2.9 (2.0 pt)

$$\mu = \sqrt{4(4+2)} \mu_{\text{B}} = 4.9 \mu_{\text{B}}$$

2 points

[Marking Scheme] Capture and Transformation of Carbon Dioxide

3.1 (2.0 pt)

A: CaCO_3

B: CaO

2 points in total; 1 point for each

3.2 (5.0 pt)

step 1: (2a) $2\text{NaOH} + \text{CO}_2 \rightarrow \text{Na}_2\text{CO}_3 + \text{H}_2\text{O}$

or $2\text{OH}^- + \text{CO}_2 \rightarrow \text{CO}_3^{2-} + \text{H}_2\text{O}$

(2b) $\text{NaOH} + \text{CO}_2 \rightarrow \text{NaHCO}_3$

or $\text{OH}^- + \text{CO}_2 \rightarrow \text{HCO}_3^-$

or $\text{Na}_2\text{CO}_3 + \text{CO}_2 + \text{H}_2\text{O} \rightarrow 2\text{NaHCO}_3$

or $\text{CO}_3^{2-} + \text{CO}_2 + \text{H}_2\text{O} \rightarrow 2\text{HCO}_3^-$

step 2: (2c) $\text{Na}_2\text{CO}_3 + \text{Ca}(\text{OH})_2 \rightarrow \text{CaCO}_3 + 2\text{NaOH}$

(2d) $\text{NaHCO}_3 + \text{Ca}(\text{OH})_2 \rightarrow \text{CaCO}_3 + \text{NaOH} + \text{H}_2\text{O}$

step 3: (2e) $\text{CaCO}_3 \rightarrow \text{CaO} + \text{CO}_2$

5 points in total; 1 point for each equation (2a) ~ (2e)

3.3 (2.0 pt)

A: $\text{H}_2 \rightarrow 2\text{H}^+ + 2\text{e}^-$

C: $2\text{H}_2\text{O} + 2\text{e}^- \rightarrow \text{H}_2 + 2\text{OH}^-$

2 points in total; 1 point for each equation

3.4 (3.0 pt)

1 $\text{H}^+ + \text{CO}_3^{2-} \rightarrow \text{HCO}_3^-$

2 $\text{H}^+ + \text{HCO}_3^- \rightarrow \text{H}_2\text{CO}_3$

3 $\text{H}_2\text{CO}_3 \rightarrow \text{H}_2\text{O} + \text{CO}_2$

3 points in total; 1 point for each equation.

Theory-Marking Scheme



M3-2

English (Official)

3.5 (2.0 pt)

☒ (a) ☐ (b) ☐ (c) ☒ (d) ☐ (e)

2 points in total; 1 point for each correct selection.

If wrong item(s) is/are included, –1 point for each till the total point is zero, no negative score.

3.6 (8.0 pt)

Rate of H^+ production:

$$r(\text{H}^+) = 60 \text{ s min}^{-1} \times 2.00 \text{ A} / (96485 \text{ C mol}^{-1})$$

2 points

$$= 1.24 \times 10^{-3} \text{ mol min}^{-1} = 1.24 \text{ mmol min}^{-1}$$

1 point

Input rate of HCO_3^- to zone B:

$$r(\text{HCO}_3^-) = 0.10 \text{ mol L}^{-1} \times 10.0 \text{ mL min}^{-1} = 1.0 \text{ mmol min}^{-1}$$

Input rate of CO_3^{2-} to zone B:

$$r(\text{CO}_3^{2-}) = 0.050 \text{ mol L}^{-1} \times 10.0 \text{ mL min}^{-1} = 0.50 \text{ mmol min}^{-1}$$

1 point



The amount of dissolved CO_2 in the flow:

$$10.0 \text{ mL min}^{-1} \times 0.033 \text{ mol L}^{-1} = 0.33 \text{ mmol min}^{-1}$$

1 point

Rate of CO_2 production:

$$r(\text{CO}_2) = r(\text{H}^+) - r(\text{CO}_3^{2-}) - 0.33 \text{ mmol min}^{-1}$$

2 points

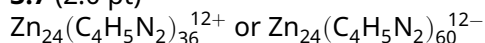
$$= 1.24 \text{ mmol min}^{-1} - 0.50 \text{ mmol min}^{-1} - 0.33 \text{ mmol min}^{-1} = 0.41 \text{ mmol min}^{-1}$$

1 point

8 points in total

Some of the steps in the derivation and in the calculation may be taken implicitly or simultaneously. As long as they are correct, full marks will be scored for each of the partial steps.

3.7 (2.0 pt)



2 points in total

Expression $\text{Zn}_{24}(\text{mIm})_{36}^{12+}$ or $\text{Zn}_{24}(\text{mIm})_{60}^{12-}$ is acceptable.

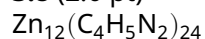
Theory-Marking Scheme



M3-3

English (Official)

3.8 (2.0 pt)



2 points in total

Expression $\text{Zn}_{12}(\text{mIm})_{24}$ or $\text{Zn}_{12}\text{C}_{96}\text{H}_{120}\text{N}_{48}$ is acceptable.

3.9 (5.0 pt)

$$M_{\text{Zn}(\text{C}_4\text{H}_5\text{N}_2)_2} = [65.38 + (12.01 \times 4 + 1.01 \times 5 + 14.02 \times 2) \times 2] \text{ g mol}^{-1} = 227.6 \text{ g mol}^{-1} \quad \text{1 point}$$

$$\begin{aligned} S &= \frac{2 \times 4\pi r^2 \times N_A \times 1 \text{ g}}{12 \times M_{\text{Zn}(\text{C}_4\text{H}_5\text{N}_2)_2}} \\ &= \frac{2 \times 4 \times 3.14 \times \left(\frac{1.16 \times 10^{-9} \text{ m}}{2}\right)^2 \times 6.02 \times 10^{23} \text{ mol}^{-1} \times 1 \text{ g}}{12 \times [65.38 + (12.01 \times 4 + 1.01 \times 5 + 14.01 \times 2) \times 2] \text{ g mol}^{-1}} \\ &= \frac{50.8 \times 10^5}{12 \times 227.6} \text{ m}^2 = 1.86 \times 10^3 \text{ m}^2 \end{aligned}$$

4 points: 2 point for the correct formula (1 point for the coefficient 2), 1 for properly introducing data, 1 for correct calculation result.

5 points in total.

Some of the steps in the derivation and in the calculation may be taken implicitly or simultaneously. As long as they are correct, full marks will be scored for each of the partial steps.

Theory-Marking Scheme



54th IChO2022
International Chemistry Olympiad
TIANJIN, CHINA

M3-4

English (Official)

3.10 (7.0 pt)

Volume of one spherical cage:

$$V_{\text{Cage}} = (4/3) \times 3.14 \times (1.16 \text{ nm}/2)^3 = 0.817 \text{ nm}^3 \quad 1 \text{ point}$$

Volume of the unit cell:

$$V_{\text{cell}} = (1.632 \text{ nm})^3 = 4.347 \text{ nm}^3 \quad 1 \text{ point}$$

Porosity:

$$R = 2 \times V_{\text{Cage}}/V_{\text{cell}} = 2 \times 0.817 \text{ nm}^3/4.347 \text{ nm}^3 = 0.376 \quad 2 \text{ points}$$

1 point for the coefficient 2

$$V_p = \frac{2 \times V_{\text{cage}} \times N_A \times 1 \text{ g}}{12 \times M_{\text{Zn}(\text{C}_4\text{H}_5\text{N}_2)_2}} = \frac{\frac{4}{3}\pi r^3 \times N_A \times 1 \text{ g}}{6 \times M_{\text{Zn}(\text{C}_4\text{H}_5\text{N}_2)_2}} \\ = \frac{0.817 \times 10^{-21} \text{ cm}^3 \times 6.02 \times 10^{23} \text{ mol}^{-1} \times 1 \text{ g}}{6 \times 227.6 \text{ g mol}^{-1}} = 0.360 \text{ cm}^3 \quad 3 \text{ points}$$

3 points: 1 for the correct formula, 1 for properly introducing data; 1 for correct calculation result

7 points in total.

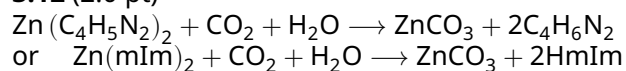
Some of the steps in the derivation and in the calculation may be taken implicitly or simultaneously. As long as they are correct, full marks will be scored for each of the partial steps.

3.11 (2.0 pt)

I (b) **II** (d)

2 points in total, 1 point for each correct selection.

3.12 (2.0 pt)



2 points in total

Theory-Marking Scheme

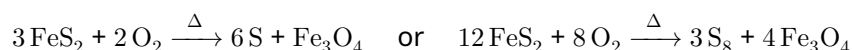


M4-1

English (Official)

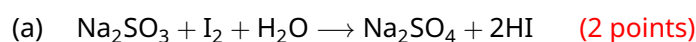
[Marking Scheme] A New Journey for Ancient Sulfur

4.1 (2.0 pt)

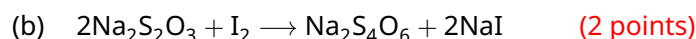
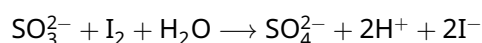


No penalty will be given if the heating symbol on the reaction arrow is missing.
–1 point if the stoichiometry is incorrect.

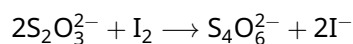
4.2 (4.0 pt)



or



or



No partial point will be given if NaOH is present for (a).
No partial point will be given if the oxidation product is not $\text{Na}_2\text{S}_4\text{O}_6$ or $\text{S}_4\text{O}_6^{2-}$ for (b).
–1 point if the stoichiometry is incorrect for each equation.

4.3 (4.0 pt)

$$0.05122 \text{ mol L}^{-1} \times 50.00 \text{ mL} = 2.561 \text{ mmol} \quad (1 \text{ point})$$

$$\frac{1}{2} \times 0.1012 \text{ mol L}^{-1} \times 18.47 \text{ mL} = 0.9346 \text{ mmol} \quad (1 \text{ point})$$

$$(2.561 \text{ mmol} - 0.9346 \text{ mmol}) \times 10^{-3} \times 20 \times 32.06 \text{ g mol}^{-1} = 1.043 \text{ g} \quad (1 \text{ point})$$

$$\frac{1.043 \text{ g}}{(1.043 \text{ g} + 17.6 \text{ g})} \times 100\% = 5.59\% \quad (1 \text{ point})$$

4 points in total

For each calculation, consider whether the logic for solving this question is correctly established;
If not, no points will be given.

–1 point if the answer is not correct due to miscalculation.

If the calculation is based on the incorrect equation answered in 4.2 (b), no penalty will be given when the calculation is correct.

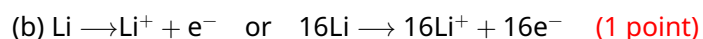
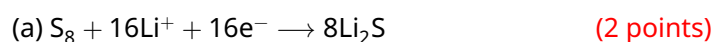
Theory-Marking Scheme



M4-2

English (Official)

4.4 (3.0 pt)



3 points in total

No partial point will be given if the cathode and anode reactions are reversed.

−1 point if the stoichiometry is incorrect for (a).

No penalty will be given if the equation is written as $\text{S} + 2\text{e}^- \rightarrow \text{S}^{2-}$ for (a).

No penalty will be given if the equation is written as $\text{S} + 2\text{Li}^+ + 2\text{e}^- \rightarrow \text{Li}_2\text{S}$ for (a).

No penalty will be given if e^- is written as e.

4.5 (1.0 pt)

$$\frac{8 \times 32.06}{16 \times 6.941} = 2.3$$

1 point in total

0.5 point will be given if the ratio is presented in reverse order.

No penalty will be given if the ratio is in reverse order but the cathode and the anode are correctly identified.

Theory-Marking Scheme



M4-3

English (Official)

4.6 (5.0 pt)

The total energy of the LIB is $3.8\text{ V} \times 3.110\text{ A h} \times 3600\text{ s/h} = 4.25 \times 10^4\text{ J}$ (1 point)

Energy consumed by the mobile phone per hour is $\frac{4.25 \times 10^4\text{ J}}{22\text{ h}} = 1.93 \times 10^3\text{ J h}^{-1}$ (1 point)

The capacity of the ideal lithium-sulfur battery pack is

$$\frac{23\text{ g} \times 16 \times 96485\text{ C mol}^{-1}}{8 \times 32.06\text{ g mol}^{-1}} = \frac{23\text{ g} \times 2 \times 96485\text{ C mol}^{-1}}{32.06\text{ g mol}^{-1}} = 1.4 \times 10^5\text{ C} \quad (1\text{ point})$$

The total energy of the ideal lithium-sulfur battery pack is

$$4.2\text{ V} \times 1.4 \times 10^5\text{ C} = 5.9 \times 10^5\text{ J} \quad (1\text{ point})$$

After a full charge, the new battery pack can provide energy for the phone to play videos

continuously for: $\frac{5.9 \times 10^5\text{ J}}{1.93 \times 10^3\text{ J h}^{-1}} = 306\text{ h}$ (1 point)

5 points in total

For each calculation, consider whether the logic for solving this question is correctly established;

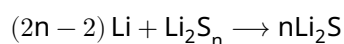
If not, no points will be given.

–1 point if the answer is not correct due to miscalculation.

–1 point if any other unit than asked unit is used in the answer.

No penalty will be given if the result is 301 h without rounded calculations.

4.7 (2.0 pt)



–1 point if the stoichiometry is incorrect.

No penalty will be given if n is written as 3-8 and the stoichiometry is correct.

Theory-Marking Scheme

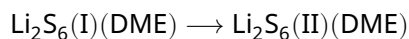


54th IChO2022
International Chemistry Olympiad
TIANJIN, CHINA

M4-4

English (Official)

4.8 (4.0 pt)



$$\Delta G_{\text{I} \rightarrow \text{II}}^{\ominus} = \Delta G_{\text{d1}}^{\ominus}(\text{I}) - \Delta G_{\text{d1}}^{\ominus}(\text{II}) = 20.68 \text{ kJ mol}^{-1} - 18.92 \text{ kJ mol}^{-1} = 1.76 \text{ kJ mol}^{-1}$$

or

$$\Delta G_{\text{I} \rightarrow \text{II}}^{\ominus} = \Delta G_{\text{dr}}^{\ominus}(\text{I}) - \Delta G_{\text{dr}}^{\ominus}(\text{II}) = 45.13 \text{ kJ mol}^{-1} - 43.37 \text{ kJ mol}^{-1} = 1.76 \text{ kJ mol}^{-1} \quad (1 \text{ point})$$

$$\Delta G_{\text{I} \rightarrow \text{II}}^{\ominus} = -RT \ln K_{\text{I} \rightarrow \text{II}}^{\ominus} \quad (1 \text{ point})$$

$$K_{\text{I} \rightarrow \text{II}}^{\ominus} = \exp \left(-\frac{1.76 \text{ kJ mol}^{-1} \times 1000}{8.314 \text{ J mol}^{-1} \text{ K}^{-1} \times 298.15 \text{ K}} \right) = 0.492 \quad (1 \text{ point})$$

$$K_{\text{I} \rightarrow \text{II}}^{\ominus} = \frac{[\text{Li}_2\text{S}_6(\text{II})]/c^{\ominus}}{[\text{Li}_2\text{S}_6(\text{I})]/c^{\ominus}} = \frac{[\text{Li}_2\text{S}_6(\text{II})]}{[\text{Li}_2\text{S}_6(\text{I})]} = 0.492 \quad (1 \text{ point})$$

4 points in total

For each calculation, consider whether the logic for solving this question is correctly established;
If not, no points will be given.

−1 point if the answer is not correct due to miscalculation.

Theory-Marking Scheme



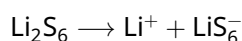
54th IChO2022
International Chemistry Olympiad
TIANJIN, CHINA

M4-5

English (Official)

4.9 (5.0 pt)

$$\frac{[\text{Li}_2\text{S}_6(\text{II})]}{[\text{Li}_2\text{S}_6(\text{I})]} = 0.492, [\text{Li}_2\text{S}_6(\text{II})] = 0.492[\text{Li}_2\text{S}_6(\text{I})]$$



$$K_{\text{d1}}^\ominus = \frac{[\text{Li}^+][\text{LiS}_6^-]}{[\text{Li}_2\text{S}_6]} = \frac{[\text{Li}^+][\text{LiS}_6^-]}{[\text{Li}_2\text{S}_6(\text{I})] + [\text{Li}_2\text{S}_6(\text{II})]}$$

(1 point)

$$K_{\text{d1}}^\ominus = \frac{[\text{Li}^+][\text{LiS}_6^-]}{1.492[\text{Li}_2\text{S}_6(\text{I})]} = \frac{K_{\text{d1}}^\ominus(\text{I})}{1.492}$$

(1 point)

or

$$K_{\text{d1}}^\ominus = \frac{[\text{Li}^+][\text{LiS}_6^-]}{3.03[\text{Li}_2\text{S}_6(\text{II})]} = \frac{K_{\text{d1}}^\ominus(\text{II})}{3.03}$$

or

$$K_{\text{d1}}^\ominus = \frac{[\text{Li}^+][\text{LiS}_6^-]}{[\text{Li}_2\text{S}_6(\text{I})] + [\text{Li}_2\text{S}_6(\text{II})]} = \frac{1}{\frac{1}{K_{\text{d1}}^\ominus(\text{I})} + \frac{1}{K_{\text{d1}}^\ominus(\text{II})}}$$



(1 point)

$$K_{\text{d1}}^\ominus(\text{I}) = \exp\left(-\frac{20.68 \text{ kJ mol}^{-1} \times 1000}{8.314 \text{ J mol}^{-1} \text{ K}^{-1} \times 298.15 \text{ K}}\right) = 2.37 \times 10^{-4}$$

(1 point)

or



$$K_{\text{d1}}^\ominus(\text{II}) = \exp\left(-\frac{18.92 \text{ kJ mol}^{-1} \times 1000}{8.314 \text{ J mol}^{-1} \text{ K}^{-1} \times 298.15 \text{ K}}\right) = 4.84 \times 10^{-4}$$

$$K_{\text{d1}}^\ominus = \frac{2.37 \times 10^{-4}}{1.492} = 1.59 \times 10^{-4}$$

(1 point)

or

$$K_{\text{d1}}^\ominus = \frac{4.84 \times 10^{-4}}{3.03} = 1.59 \times 10^{-4}$$

or

$$K_{\text{d1}}^\ominus = \frac{1}{\frac{1}{K_{\text{d1}}^\ominus(\text{I})} + \frac{1}{K_{\text{d1}}^\ominus(\text{II})}} = \frac{1}{\frac{1}{2.37 \times 10^{-4}} + \frac{1}{4.84 \times 10^{-4}}} = 1.59 \times 10^{-4}$$

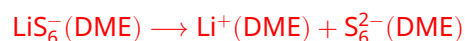
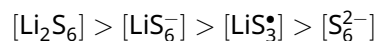
5 points in total

For each calculation, consider whether the logic for solving this question is correctly established;

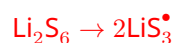
If not, no points will be given.

-1 point if the answer is not correct due to miscalculation.

4.10 (4.0 pt)



$$\Delta G_{\text{d2}}^\ominus = -RT \ln K_{\text{d2}}^\ominus, K_{\text{d2}}^\ominus = \exp\left(-\frac{100.55 \text{ kJ mol}^{-1} \times 1000}{8.314 \text{ J mol}^{-1} \text{ K}^{-1} \times 298.15 \text{ K}}\right) = 2.418 \times 10^{-18}$$



$$K_{\text{dr}}^\ominus = \frac{[\text{LiS}_3^\bullet]^2}{[\text{Li}_2\text{S}_6]} = \frac{[\text{LiS}_3^\bullet]^2}{[\text{Li}_2\text{S}_6(\text{I})] + [\text{Li}_2\text{S}_6(\text{II})]} = \frac{[\text{LiS}_3^\bullet]^2}{1.492 [\text{Li}_2\text{S}_6(\text{I})]} = \frac{K_{\text{dr}}^\ominus(\text{I})}{1.492}$$



$$K_{\text{dr}}^\ominus(\text{I}) = \exp\left(-\frac{45.13 \text{ kJ mol}^{-1} \times 1000}{8.314 \text{ J mol}^{-1} \text{ K}^{-1} \times 298.15 \text{ K}}\right) = 1.24 \times 10^{-8}$$

$$K_{\text{dr}}^\ominus = \frac{1.24 \times 10^{-8}}{1.492} = 8.31 \times 10^{-9}$$

4 points in total

+1 point if $[\text{Li}_2\text{S}_6]$ is in the first blank, but (2),(3),(4) and $[\text{LiS}_6^-]$, $[\text{LiS}_3^\bullet]$, $[\text{S}_6^{2-}]$ are not in one-to-one correspondence.

(2), (3), (4) and $[\text{LiS}_6^-]$, $[\text{LiS}_3^\bullet]$, $[\text{S}_6^{2-}]$ must be in one-to-one correspondence, e.g. -2 points if $[\text{LiS}_3^\bullet] > [\text{LiS}_6^-] > [\text{S}_6^{2-}]$.

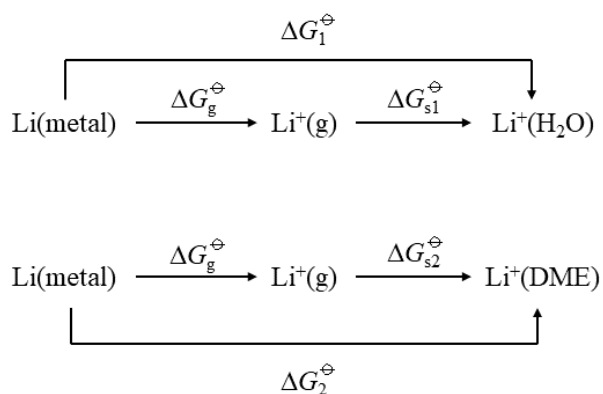
Theory-Marking Scheme



M4-7

English (Official)

4.11 (6.0 pt)



$$\Delta G_1^\ominus = \Delta G_g^\ominus + \Delta G_{s1}^\ominus \quad (1) \quad (1 \text{ point})$$

$$\Delta G_2^\ominus = \Delta G_g^\ominus + \Delta G_{s2}^\ominus \quad (2) \quad (1 \text{ point})$$

$$(2) - (1): \Delta G_2^\ominus - \Delta G_1^\ominus = \Delta G_{s2}^\ominus - \Delta G_{s1}^\ominus \quad (1 \text{ point})$$

$$\text{Li(metal)} \rightarrow \text{Li}^+(\text{H}_2\text{O}) + \text{e}^-, \Delta G_1^\ominus = nFE^\ominus(\text{Li}^+(\text{H}_2\text{O})/\text{Li}) \quad (1 \text{ point})$$

$$\text{Li(metal)} \rightarrow \text{Li}^+(\text{DME}) + \text{e}^-, \Delta G_2^\ominus = nFE^\ominus(\text{Li}^+(\text{DME})/\text{Li}) \quad (1 \text{ point})$$

$$nFE^\ominus(\text{Li}^+(\text{DME})/\text{Li}) = nFE^\ominus(\text{Li}^+(\text{H}_2\text{O})/\text{Li}) - \Delta G_{s1}^\ominus + \Delta G_{s2}^\ominus$$

$$E^\ominus(\text{Li}^+(\text{DME})/\text{Li}) = -3.040 - \frac{[(-116.9 \text{ kJ mol}^{-1}) - (-114.6 \text{ kJ mol}^{-1})] \times 1000}{96485 \text{ C mol}^{-1}} = -3.016 \text{ V} \quad (1 \text{ point})$$

6 points in total

For each calculation, consider whether the logic for solving this question is correctly established.

If not, no points will be given.

−1 point if the answer is not correct due to miscalculation.

4.12 (5.0 pt)

Assume $[S_4^{2-}] = c_1$, the original concentration of Li_2S is c_0
According to the charge balance:

$$2c_0 = 1 \times [S_3^{\bullet-}] + 2 \times [S_4^{2-}] + 2 \times [S_5^{2-}] + 2 \times [S_6^{2-}] + 2 \times [S_7^{2-}] + 2 \times [S_8^{2-}] \quad (1 \text{ point})$$

$$2c_0 = 17.50c_1 + 1.00 \times 2c_1 + 4.50 \times 2c_1 + 55.00 \times 2c_1 + 5.00 \times 2c_1 + 0.75 \times 2c_1 = 150c_1$$

$$c_0 = 75c_1 \quad (1 \text{ point})$$

According to the material balance:

$$c_0 + \frac{4.81 \text{ mg}}{32.07 \text{ g mol}^{-1} \times 10.00 \text{ mL}} = 17.50 \times 3c_1 + 1.00 \times 4c_1 + 4.50 \times 5c_1 + 55.00 \times 6c_1 + 5.00 \times 7c_1 + 0.75 \times 8c_1 \quad (1 \text{ point})$$

$$75c_1 + 0.0150 \text{ mmol mL}^{-1} = 450c_1 \quad (1 \text{ point})$$

$$c_1 = 4.00 \times 10^{-5} \text{ mmol mL}^{-1}$$

$$m(Li_2S) = 75 \times 4.00 \times 10^{-5} \text{ mmol mL}^{-1} \times 10.00 \text{ mL} \times 45.96 \text{ g mol}^{-1} = 1.38 \text{ mg} \quad (1 \text{ point})$$

5 points in total

For each calculation, consider whether the logic for solving this question is correctly established.
If not, no points will be given.

−1 point if the answer is not correct due to miscalculation.

[Marking Scheme] Interconversion among Nitrogen Oxides

15% of the total											
Question	5.1	5.2	5.3	5.4	5.5	5.6	5.7	5.8	5.9	5.10	Total
Points	4	4	2	4	3	8	4	6	4	6	45
Score											

5.1 (4.0 pt)

Using the definition of $K_{c1} = \frac{[\text{N}_2\text{O}_2]}{[\text{NO}]^2}$, $[\text{N}_2\text{O}_2] = K_{c1} [\text{NO}]^2$ is obtained.

Thus, $r_+ = k_2 [\text{N}_2\text{O}_2] [\text{O}_2] = k_2 K_{c1} [\text{NO}]^2 [\text{O}_2]$

4 points in total

1 point for the correct expression of K_{c1}

1 point for the expression of r_+ with $[\text{N}_2\text{O}_2]$ and $[\text{O}_2]$

1 point for the correct $[\text{N}_2\text{O}_2]$

1 point for the correct r_+

5.2 (4.0 pt)

Combining $K_{c1} = \exp(M - N/T)$, $k_2 = A_2 \exp\left(-\frac{E_{a,2}}{RT}\right)$ and $k_+ = k_2 K_{c1}$,

$$k_+ = k_2 K_{c1} = A_2 \exp\left(-\frac{E_{a,2}}{RT}\right) \exp\left(M - \frac{NR}{RT}\right) = A_2 \exp(M) \exp\left(-\frac{E_{a,2} + NR}{RT}\right).$$

Comparing this equation with Arrhenius equation,

$A_+ = A_2 \exp(M)$ and $E_{a+} = E_{a,2} + NR$ are obtained.

4 points in total

1 point for the correct expression of k_2

1 point for the correct expression of k_+ with $E_{a,2}$, A_2 , M and N

1 point for the correct expression of A_+

1 point for the correct expression of E_{a+}

5.3 (2.0 pt)

Calculation:

According to Arrhenius equation, $\ln \frac{k_+(T_2)}{k_+(T_1)} = \frac{E_{a+}}{R} \left(\frac{1}{T_1} - \frac{1}{T_2} \right)$ is obtained.

Thus, $k_+(700 \text{ K}) = 6.86 \times 10^5 \text{ L}^2 \text{ mol}^{-2} \text{ min}^{-1}$

2 points in total

If $k_+(700 \text{ K})$ is incorrect due to miscalculation, 1 point will be deducted.

5.4 (4.0 pt)

Calculation:

Because $\Delta_r H_m^\ominus$ and $\Delta_r S_m^\ominus$ do not change with temperature,

$$\begin{aligned} \Delta_r H_m^\ominus(600\text{K}) &= \Delta_r H_m^\ominus(298\text{K}) \\ &= 2\Delta_f H_m^\ominus(\text{NO}_2, 298\text{K}) - \Delta_f H_m^\ominus(\text{NO}, 298\text{K}) - \Delta_r H_m^\ominus(\text{O}_2, 298\text{K}) \\ &= -116.4 \text{ kJ mol}^{-1} \end{aligned}$$

$$\begin{aligned} \Delta_r S_m^\ominus(600\text{K}) &= \Delta_r S_m^\ominus(298\text{K}) \\ &= 2S_m^\ominus(\text{NO}_2, 298\text{K}) - 2S_m^\ominus(\text{NO}, 298\text{K}) - S_m^\ominus(\text{O}_2, 298\text{K}) \end{aligned}$$

$$-146.6 \text{ J K}^{-1} \text{ mol}^{-1}$$

For a thermostatic process, $\Delta G = \Delta H - T\Delta S$, thus $\Delta_r G_m^\ominus(600 \text{ K}) = -28.44 \text{ kJ mol}^{-1}$ Using the equation of $K_p^\ominus = \exp(-\Delta_r G_m^\ominus/RT)$, $K_p^\ominus(600 \text{ K}) = 299.2$ is obtained.

4 points in total

1 point for the correct value of $\Delta_r H_m^\ominus(600 \text{ K})$ 1 point for the correct value of $\Delta_r S_m^\ominus(600 \text{ K})$ 1 point for the correct value of $\Delta_r G_m^\ominus(600 \text{ K})$ or the correct relationship among $\Delta_r H_m^\ominus(600 \text{ K})$, $\Delta_r S_m^\ominus(600 \text{ K})$ and $K_p^\ominus(600 \text{ K})$ 1 point for the correct value of $K_p^\ominus(600 \text{ K})$

If any miscalculation exists, 1 point will be deducted.

5.5 (3.0 pt)

Calculation:

Using the equation of $\Delta_r U_m^\ominus = \Delta_r H_m^\ominus - \sum \nu RT$ and $\sum \nu$ value of -1 ($\nu_{\text{NO}_2} - \nu_{\text{NO}} - \nu_{\text{O}_2} = 2 - 2 - 1 = -1$),

$$\Delta_r U_m^\ominus(600 \text{ K}) = -111.4 \text{ kJ mol}^{-1} \text{ is obtained.}$$

3 points in total

1 point for the correct relationship between $\Delta_r U_m^\ominus$ and $\Delta_r H_m^\ominus$ 1 point for the correct value of $\sum \nu$ 1 point for the correct value of $\Delta_r U_m^\ominus(600 \text{ K})$ If $\Delta_r U_m^\ominus(600 \text{ K})$ is incorrect due to miscalculation, 0.5 points will be deducted

Theory-Marking Scheme



54th IChO 2022
International Chemistry Olympiad
TIANJIN, CHINA

M5-3

English (Official)

5.6 (6.0 pt)

Calculation:

When chemical equilibrium is reached, $K_c = \frac{[\text{NO}_2]_{\text{eq}}^2}{[\text{NO}]_{\text{eq}}^2 [\text{O}_2]_{\text{eq}}}$ and $r_{-\text{eq}} = r_{+\text{eq}}$.

Thus, $r_{-\text{eq}} = r_{+\text{eq}} = k_+ [\text{NO}]_{\text{eq}}^2 [\text{O}_2]_{\text{eq}} = k_+ \frac{[\text{NO}_2]_{\text{eq}}^2}{K_c} = k_- [\text{NO}_2]_{\text{eq}}^2$

Therefore, $r_- = k_- [\text{NO}_2]^2$

Using the equation of $K_c = K_p^\ominus \left(\frac{RT}{p^\ominus}\right)^{-\sum_B \nu_B}$ and K_p^\ominus (600 K) value of 299.2, $K_c = 1.49 \times 10^4 \text{ L mol}^{-1}$ is obtained.

According to $k_- = k_+/K_c$, the value of k_- is calculated to be $44.4 \text{ L mol}^{-1} \text{ min}^{-1}$. If the K_p^\ominus (600 K) value is used as 350.0, the result should be 38.0.

8 points in total

1 point for the consideration of $r_{-\text{eq}} = r_{+\text{eq}}$

2 points for the correct expression of r_-

1 point for the correct relationship among k_+ , K and k_-

4 points for the correct value of k_-

If K_p^\ominus instead of K_c is used, 2 points will be deducted

If k_- is incorrect due to miscalculation, 1 point will be deducted

5.7 (4.0 pt)

Calculation:

According to the stoichiometry of the reaction and setting $p_{\text{NO}_2} = 0.8p_0$, $p_{\text{NO}} = 0.2p_0$ and $p_{\text{O}_2} = 0.1p_0$ are obtained.

$$K_p^\ominus = \frac{(p_{\text{NO}_2}/p^\ominus)^2}{(p_{\text{NO}}/p^\ominus)^2 (p_{\text{O}_2}/p^\ominus)} = \frac{(0.8p_0/p^\ominus)^2}{(0.2p_0/p^\ominus)^2 (0.1p_0/p^\ominus)} = \frac{160p^\ominus}{p_0}$$

Therefore, $p_0 = 53.5 \text{ kPa}$. $p_{\text{total}} = p_{\text{NO}_2} + p_{\text{NO}} + p_{\text{O}_2} = 1.1p_0 = 58.8 \text{ kPa}$

If the K_p^\ominus (600 K) value is used as 350.0, the result of 50.3 kPa is obtained.

4 points in total

1 point for the expression of K_p^\ominus . If p^\ominus is omitted, no penalty.

1 point for the correct ratio among p_{NO_2} , p_{NO} and p_{O_2}

2 points for the correct value of p_{total}

If p_{total} is incorrect due to miscalculation, 1 point will be deducted

**5.8 (6.0 pt)**

The given mechanism involves a pre-equilibrium:

$$r_{S+1} = r_{S-1}, k_{S+1} [O_2] \theta_v^2 = k_{S-1} \theta_O^2, \theta_O / \theta_v = (k_{S+1} [O_2] / k_{S-1})^{0.5}$$

$$r_{S+2} = r_{S-2}, k_{S+2} [NO] \theta_v = k_{S-2} \theta_{NO}, \theta_{NO} / \theta_v = k_{S+2} [NO] / k_{S-2}$$

$$r_{S+4} = r_{S-4}, k_{S+4} \theta_{NO_2} = k_{S-4} [NO_2] \theta_v, \theta_{NO_2} / \theta_v = k_{S-4} [NO_2] / k_{S+4}$$

Because $\theta_v + \theta_{NO} + \theta_{NO_2} + \theta_O = 1$, using the ratios among these coverages,

$$\theta_v = \frac{1}{1 + (k_{S+1} [O_2] / k_{S-1})^{0.5} + k_{S+2} [NO] / k_{S-2} + k_{S-4} [NO_2] / k_{S+4}} \text{ is obtained.}$$

6 points in total

1 point for the correct expression of θ_O / θ_v

1 point for the correct expression of θ_{NO} / θ_v

1 point for the correct expression of θ_{NO_2} / θ_v

1 point for the utilization of the normalized condition

2 points for the correct expression of θ_v

If no derivation is provided, 6 points for the correct expression of θ_v

One of the numerator and the four parts of the denominator of this expression is wrong, 4 points;
two of them are wrong, 2 points; three or more are wrong, 0 point.

5.9 (4.0 pt)

(B)

4 points for choosing (B)

2 points for choosing (A)

0 points for other choices

5.10 (6.0 pt)

(B)

6 points for choosing (B)

0 points for other choices

[Marking Scheme] Enabling Phosphines

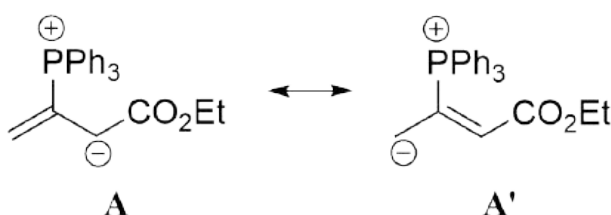
6.1 (3.0 pt)

R

3 points in total;

3 points for assigning as *R*

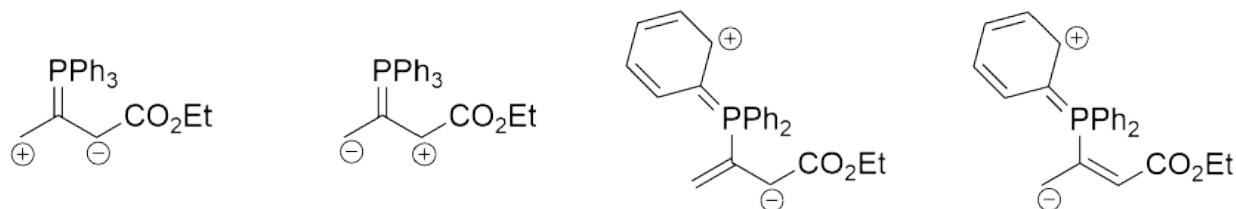
6.2 (6.0 pt)



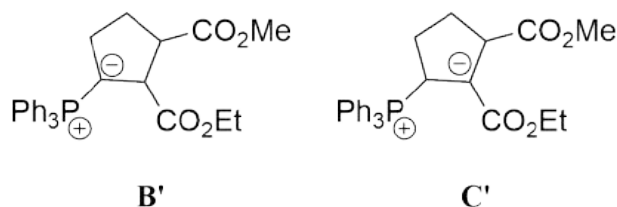
6 points in total.

3 points for each;

no points if any structure containing C=P is given:



6.3 (8.0 pt)



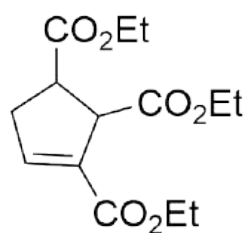
8 points in total.

4 points for each.

Reasonable resonance structures of **B'** and **C'** are also acceptable.

1 point is given if structures with two methyl esters or two ethyl esters.

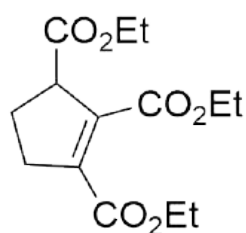
6.4 (5.0 pt)



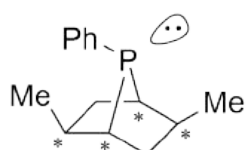
6

5 points in total.

2 points if the isomerized structure is given:



6.5 (6.0 pt)



P2

6 points in total.

6 points for 4 correct asterisks, 1.5 points for each;

−1.5 points for every wrong asterisk till 0 points.

6.6 (3.0 pt)

90:10

3 points in total;

3 points for the correct answer: 90/10 or 9/1 or 9

Theory-Marking Scheme



M6-3

English (Official)

6.7 (5.0 pt)

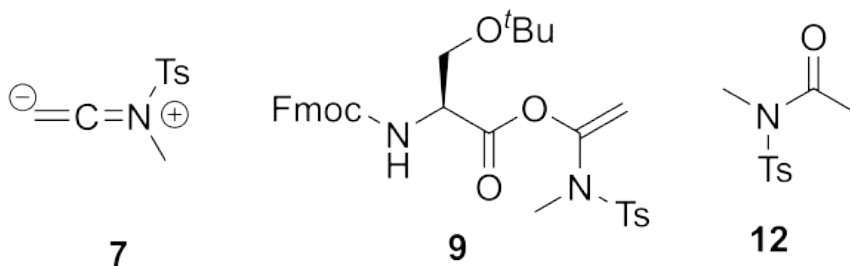
(d)

5 points in total;

5 points for choosing (d)

Organic Molecules in Life

7.1 (12.0 pt)

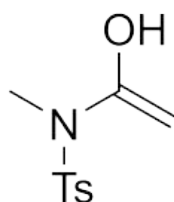


12 points in total.

4 points for each;

2 points for the enantiomer of **9**, or the structure missing the chirality is given;

2 points if the enol form of **12** is given:



Theory-Marking Scheme

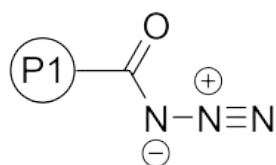


54th IChO 2022
International Chemistry Olympiad
TAMU, CHINA

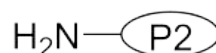
M7-2

English (Official)

7.2 (8.0 pt)



15

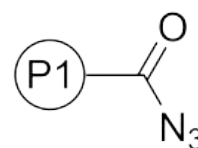
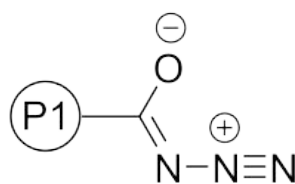
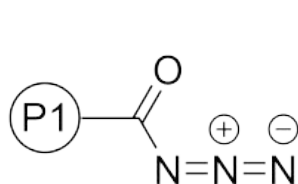


16

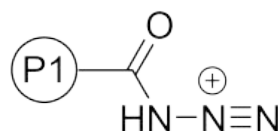
8 points in total.

4 points for each;

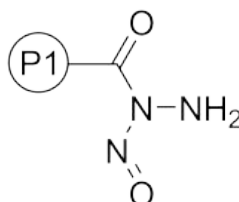
4 points for the resonance structures of **15** or if azide is written as N₃:



2 points for its protonated form:



1 point if the nitrosation on the nitrogen linked to carbonyl is given:



Theory-Marking Scheme

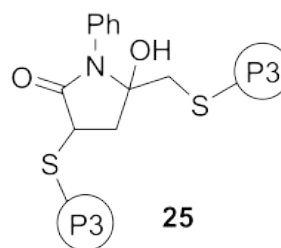
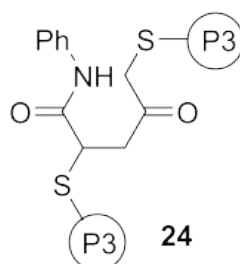
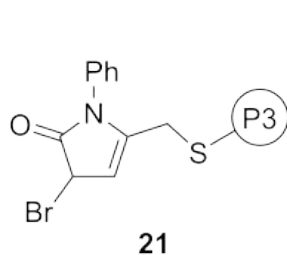


54th IChO2022
International Chemistry Olympiad
TIANJIN, CHINA

M7-3

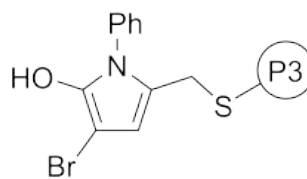
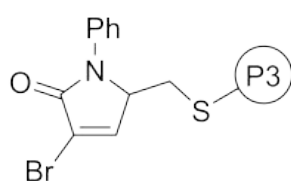
English (Official)

7.3 (12.0 pt)

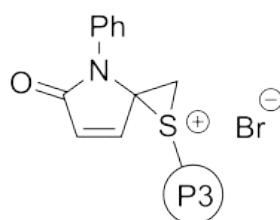


12 points in total.

4 points for the isomers of **21**:



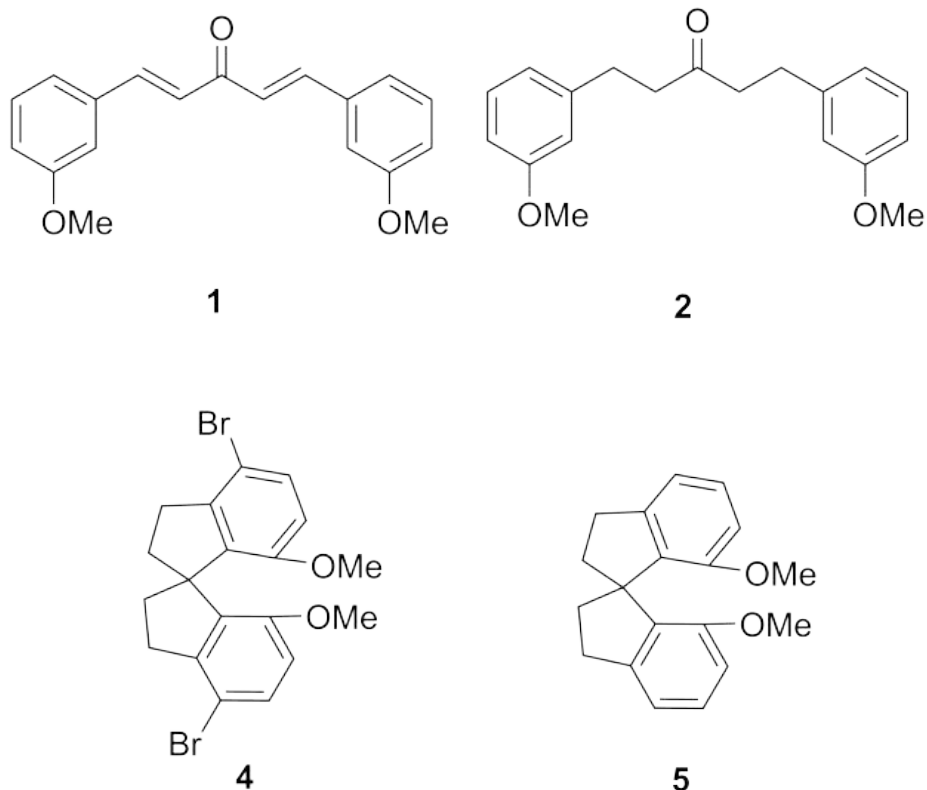
2 points if the form of NGP is given:



1 point if the second protein is added at the β position of amide group, and no double punishment for **24** and **25**.

[Marking Scheme] Amazing Chiral Spiro Catalyst

8.1 (16.0 pt)



16 points in total.
4 points for each correct structure as shown above.
4 points if the *cis* isomer of **1** is given
2 points if the regioisomer of **4** is given

8.2 (2.0 pt)

(c)

2 points in total;
2 points for choosing (c)

8.3 (2.0 pt)

(b)

2 points in total;
2 points for choosing (b)

Theory-Marking Scheme



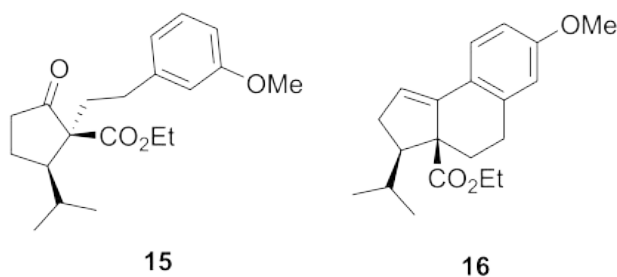
M8-2

English (Official)

8.4 (2.0 pt)
Ir(III) or +3
2 points in total;
2 points for Ir(III) or +3

8.5 (2.0 pt)
6
2 points in total;
2 points for 6

8.6 (8.0 pt)



8 points in total.
4 points for each;
2 points for correct skeleton, missing or wrong stereochemistry;
2 points if the regioisomer of **16** is given

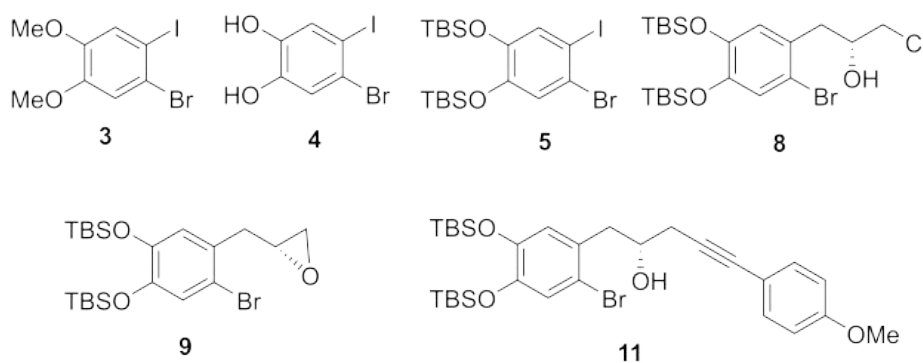
8.7 (2.0 pt)
(b)
2 points in total;
2 points for choosing (b)

8.8 (2.0 pt)
(a)
2 points in total;
2 points for choosing (a)

[Marking Scheme] Total Synthesis of Capitulactone

9% of the total					
Question	9.1	9.2	9.3	9.4	Total
Points	24	2	16	2	44
Score					

9.1 (24.0 pt)



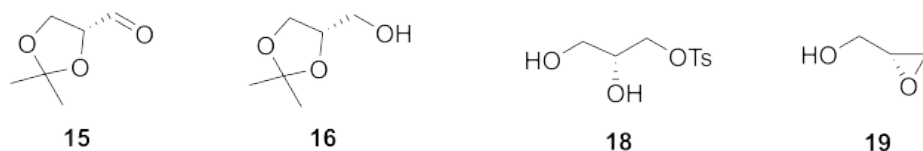
24 points in total.
4 points for each;
2 points for each structure of **8**, **9** or **11** with missing or wrong stereochemistry.

9.2 (2.0 pt)

(d)

2 points in total;
2 points for choosing (d)

9.3 (16.0 pt)



16 points in total.
4 points for each;
2 points if structure with missing or wrong stereochemistry is given.

Theory-Marking Scheme



M9-2

English (Official)

9.4 (2.0 pt)

(b)

2 points in total;

2 points for choosing (b)